



Pricelist – Implements

INFORMATIONS

MOUNTING

- STANDARD MOUNTING – EURO
- MOUNTING FOR MINILOADERS TYPE PLATE – THALER, SCHAFFER KWADRAT, FUCHS –170€
- MOUNTING DO MINILOADERS TYPE HOOKS – WEIDEMANN, GIANT, SCHAFFER SWH – 190€
- MOUNTING FOR TELESCOPIC LOADERS - 260€
- MOUNTING KOMBI FOR EXAMPLE 3-PKT PLUS EURO - 130€

WORKING WIDTH

- POSSIBILITY TO MAKE EQUIPMENT WITH WIDTH NOT LISTED IN THIS PRICE LIST

STANDARD VERSION

- BUCKETS – IN STANDARD RIB INSIDE, AS AN OPTION ROUND BOTTOM
- BUCKETS WITH GRIPPER – STANDARD BOLTED SIDES
- BUCKETS WITH GRAB – STANDARD BOLTED SIDES

CONDITIONS OF DELIVERY

- DELIVERY TIME: 4 – 6 WEEKS
- TRANSPORT COST NOT INCLUDED IN THE PRICE, CALCULATED SEPARATELY IN EACH ORDER

IMPLEMENTS	STANDARD PACKING	AT THE CUSTOMER REQUEST
SNOW PLOWS	LOOSE ON THE TRUCK	50 - 60 € ON THE PALLET BOX
ADAPTERS, PALLET FORKS, BALE GRIPPERS	ON THE PALLET 3-5 PCS IN STACK	EACH ITEM ON THE SEPARATELY PALLET – EXTRA CHARGE 10-20 € PER PALLET DEPEND ON THE SIZE
BUCKETS, FORK WITH GRIPPERS, BUCKET WITH GRIPPERS	LOOSE ON THE TRUCK	10 – 20 € PER PALLET

AVAILABLE COLORS

- STANDARD PAINTING – RAL 7021











RAL	COLOR	EXAMPLE
1037	YELLOW	
2003	PASTEL ORANGE	
2008	BRIGHT ORANGE	
3000	RED	
5004	BLACK BLUE	
5015	SKY BLUE	
6010	GREEN	
7016	ANTRACITE GRAY	
7021	BLACK GREY	
9005	BLACK	

TABLE OF CONTENTS

1.COMPACT EQUIPMENT	5
2.EQUIPMENT FOR FRONT LOADER. MINILOADER, TELESKOPIC LOADER.....	7
BUCKET	8
HIGH TIP BUCKET	12
4IN1 BUCKET.....	13
STONE BUCKET	14
POTATO/BEETROOT BUCKET.....	16
MANURE FORK	16
FORK WITH GRIPPER	18
BUCKET WITH GRIPPER.....	20
BUCKET WITH GRAB	23
SILAGE CUTTER.....	24
BALE GRIPPER	25
BALE TRANSPORTER	27
BALE CUTTER	28
BALE UNWINDER	28
BALE FORK.....	28
STRAW BALE TRANSPORTER.....	29
HYDRAULIC WOOD SPLITTER	30
WOOD GRIPPER	30
PALLET FORKS ISO FEM II.....	32
BOX ROTATOR.....	33
TRANSPORT BOX	33
TOOL PLATFORM.....	34
LOAD HOOK	34
BIGBAG LIFTER.....	34
ADAPTER	35
MACHINE LIFTER – TUZ II / III	36
FORKLIFT BUCKET	36
WELDED ATTACHMENTS	36
RUBBER SHIELD	37
CLEANING BRUSH	38
DIGGING ARM.....	39
EARTHDRILL	39
GRADER	39
3.BEEDING AND FEEDING MACHINES.....	40
BEDDING BUCKET	40

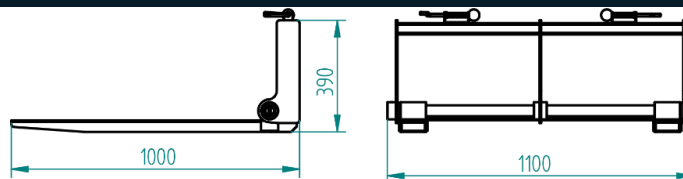
TABLE OF CONTENTS

FEEDING BUCKET WITH AUGER – ONE SIDE	42
FEEDING BUCKET.....	42
FEED MIXER	44
SPECIAL OPTIONS FOR FEEDING BUCKET	44
SILAGE CUTTER.....	45
SILLAGE ROLLER / CAMPBELL ROLLER.....	45
FEEDING AUGER	46
BALE UNROLLER	46
BALE WRAPPER	46
4.MUNICIPAL MACHINES	47
SNOW PLOW	47
ROTARY SNOW PLOW	48
SALT / SAND SPREADER	49
BROOM WEED MACHINE	49
STRIP BROOM.....	50
5.CONCRETE MIXERS.....	50
CONCRETE MIXER.....	50
BETONMIXER	51
6.OTHER EQUIPMENT	51
RIDING ARENA GRADER PRO	51
DISC HARROW	51

COMPACT EQUIPMENT

PALLET FORKS

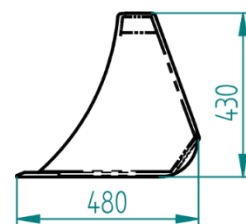
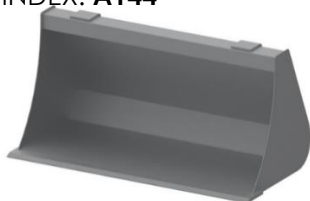
INDEX: **L024**



Nr. Art.	Capacity (kg)	Weight (kg)
L024	400	45

STANDARD BUCKET MINI

INDEX: **A144**



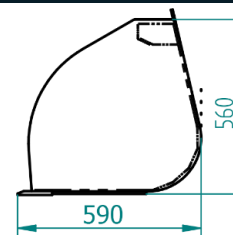
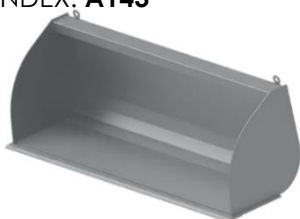
FEATURES

- **COVER** - 4MM
- **SIDE** - 4MM
- **CUTTING EDGE** - HB500/110X12MM

Nr. Art.	Width (mm)	Weight (kg)	Capacity (m3)
A144.100	1000	60	0,08
A144.120	1200	70	0,10
A144.140	1400	80	0,14

VOLUME BUCKET MINI

INDEX: **A143**



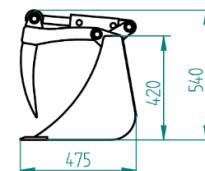
FEATURES

- **COVER** - 4MM
- **SIDE** - 4MM
- **CUTTING EDGE** - HB500/110X12MM

Nr. Art.	Width (mm)	Weight (kg)	Capacity (m3)
A143.100	1000	76	0,22
A143.120	1200	91	0,26
A143.140	1400	107	0,31
A143.160	1600	123	0,35

BUCKET WITH GRIPPER MINI

INDEX: **A518**



FEATURES

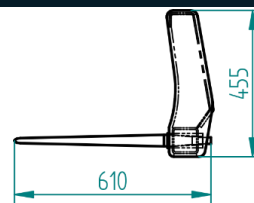
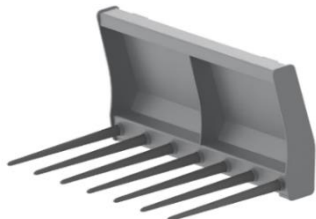
- **COVER** - 4MM
- **SIDE** - 4MM
- **CUTTING EDGE** - HB500/110X12MM

Nr. Art.	Width (mm)	Weight (kg)	Teeth (pieces)
A518.100	1000	75	5
A518.120	1200	90	6
A518.140	1400	105	7
A518.160	1600	120	8
A518.180	1800	135	9

COMPACT EQUIPMENT

MANURE FORK MINI

INDEX: **B109**



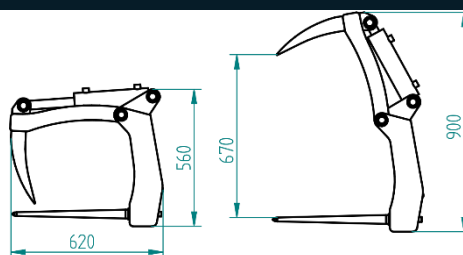
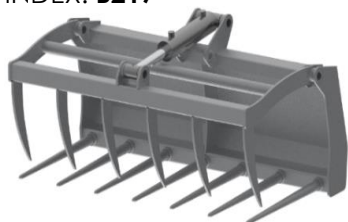
FEATURES

- **COVER** - 4MM
- **TEETH** - 610MM

Nr. Art.	Width (mm)	Weight (kg)	Teeth (pieces)
B109.100	1000	55	6
B109.120	1200	67	7
B109.140	1400	78	8

FORK WITH GRIPPER

INDEX: **B217**



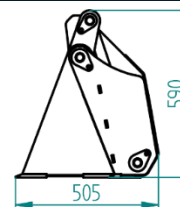
FEATURES

- **COVER** - 4MM
- **TEETH BOTTOM** - 610MM

Nr. Art.	Width (mm)	Weight (kg)	Teeth (pieces)
B217.100	1000	90	5/6
B217.120	1200	108	6/7
B217.140	1400	126	7/8

4IN1 BUCKET MINI

INDEX: **A304**



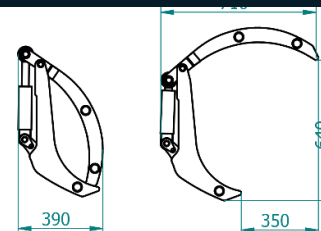
FEATURES

- **COVER** - 5MM
- **SIDE** - 8MM
- **CUTTING EDGE** - HB500/110X16MM

Nr. Art.	Width (mm)	Weight (kg)	Capacity (m3)
A304.120	1200	132	0,16
A304.140	1400	152	0,18

MULTIFUNCTION GRIPPER

INDEX: **J203**



FEATURES

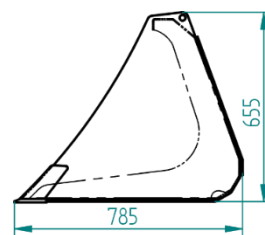
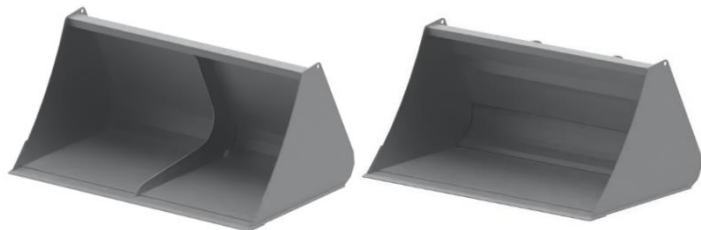
- **THICKNESS** - 6MM

Nr. Art.	Width (mm)	Weight (kg)
J203.140	1400	79
J203.165	1650	91

BUCKETS

STANDARD BUCKET

INDEX: **A103**



FEATURES

- **COVER** - 4MM
- **SIDE** - 5MM
- **CUTTING EDGE** - HB500/110X12MM

OPTIONS

- **BOLT-ON TEETH** 15 €
- **ROUND BOTOM (INSTEAD OF RIB)** + 5% ON PRICE
- **OUTSIDE ROUNDED SIDE WALL** + 2% ON PRICE

INDUSTRIAL BUCKET

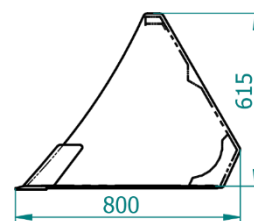
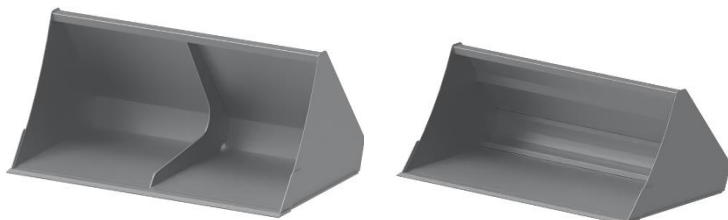
*+20 % ON PRICE, BASED ON WIDTH

- **COVER** 5MM
- **SIDE** - 6MM
- **CUTTING EDGE** - HB500/110X16MM

Nr. Art.	Width (mm)	Weight (kg)	Capacity (m3)
A103.090	900	110	0,25
A103.100	1000	120	0,28
A103.110	1100	125	0,31
A103.120	1200	130	0,34
A103.130	1300	140	0,36
A103.140	1400	145	0,39
A103.150	1500	150	0,42
A103.160	1600	160	0,45
A103.180	1800	180	0,5
A103.200	2000	190	0,56
A103.220	2200	205	0,62
A103.230	2300	215	0,64
A103.240	2400	220	0,67
A103.250	2500	225	0,7

STANDARD BUCKET 30 DEGREES

INDEX: **A109**



FEATURES

- **COVER** - 4MM
- **SIDE** - 5MM
- **CUTTING EDGE** - HB500/110X12MM

OPTIONS

- **BOLT-ON TEETH** + 15 €
- **ROUND BOTOM (INSTEAD OF RIB)** + 5% ON PRICE
- **OUTSIDE ROUNDED SIDE WALL** + 2% ON PRICE

INDUSTRIAL BUCKET

*+20 % ON PRICE, BASED ON WIDTH

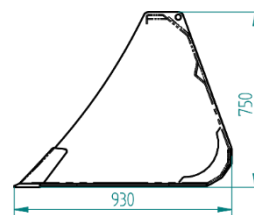
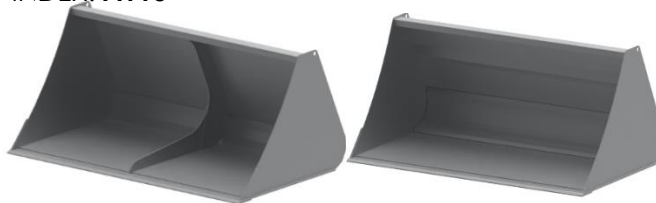
- **COVER** 5MM
- **SIDE** - 6MM
- **CUTTING EDGE** - HB500/110X16MM

Nr. Art.	Width (mm)	Weight (kg)	Capacity (m3)
A109.090	900	110	0,25
A109.100	1000	120	0,28
A109.110	1100	125	0,31
A109.120	1200	130	0,34
A109.130	1300	140	0,36
A109.140	1400	145	0,39
A109.150	1500	150	0,42
A109.160	1600	160	0,45
A109.180	1800	180	0,50
A109.200	2000	190	0,56
A109.220	2200	205	0,62
A109.230	2300	215	0,64
A109.240	2400	220	0,67
A109.250	2500	225	0,70

BUCKETS

VOLUME BUCKET

INDEX: **A110**



FEATURES

- **COVER** - 5MM
- **SIDE** - 5MM
- **CUTTING EDGE** - HB500/110X16MM

OPTIONS

- **BOLT-ON TEETH** +15 €
- **ROUND BOTOM (INSTEAD OF RIB)** + 5% ON PRICE
- **OUTSIDE ROUNDED SIDE WALL** + 2% ON PRICE

INDUSTRIAL BUCKET

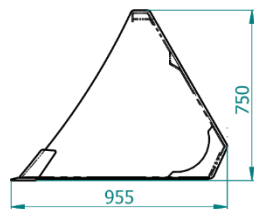
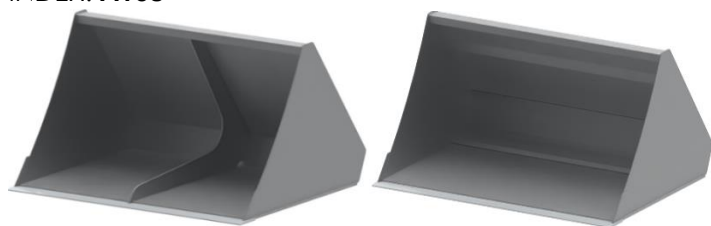
*+20% ON PRICE, BASED ON WIDTH

- **COVER** - 6MM
- **SIDE** - 6MM
- **CUTTING EDGE** - HB500/150X16MM

Nr. Art.	Width (mm)	Weight (kg)	Capacity (m3)
A110.100	1000	170	0,38
A110.110	1100	180	0,42
A110.120	1200	190	0,46
A110.130	1300	195	0,49
A110.140	1400	205	0,53
A110.150	1500	215	0,57
A110.160	1600	225	0,61
A110.180	1800	255	0,68
A110.200	2000	275	0,76
A110.220	2200	295	0,84
A110.240	2400	310	0,91
A110.250	2500	315	0,95

VOLUME BUCKET 30 DEGREES

INDEX: **A108**



FEATURES

- **COVER** - 5MM
- **SIDE** - 5MM
- **CUTTING EDGE** - HB500/110X16MM

OPTIONS

- **BOLT-ON TEETH** + 15 €
- **ROUND BOTOM (INSTEAD OF RIB)** + 5% ON PRICE
- **OUTSIDE ROUNDED SIDE WALL** + 2% ON PRICE

INDUSTRIAL BUCKET

*+20% ON PRICE, BASED ON WIDTH

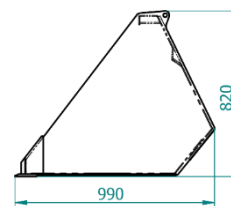
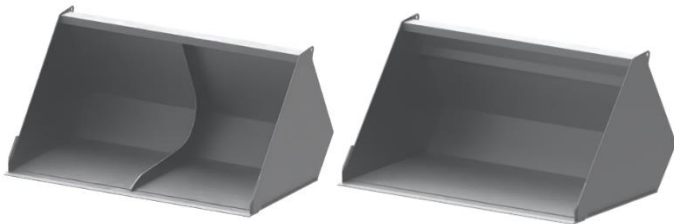
- **COVER** - 6MM
- **SIDE** - 6MM
- **CUTTING EDGE** - HB500/150X16MM

Nr. Art.	Width (mm)	Weight (kg)	Capacity (m3)
A108.100	1000	170	0,38
A108.110	1100	180	0,42
A108.120	1200	190	0,46
A108.130	1300	195	0,49
A108.140	1400	205	0,53
A108.150	1500	215	0,57
A108.160	1600	225	0,61
A108.180	1800	255	0,68
A108.200	2000	275	0,76
A108.220	2200	295	0,84
A108.240	2400	310	0,91
A108.250	2500	315	0,95

BUCKETS

VOLUME BUCKET HD

INDEX: **A135**



FEATURES

- **COVER** - 5MM
- **SIDE** - 6MM
- **CUTTING EDGE** - HB500/110X16MM

OPTIONS

- **BOLT-ON TEETH** + 15 €
- **ROUND BOTOM (INSTEAD OF RIB)** + 5% ON PRICE
- **OUTSIDE ROUNDED SIDE WALL** + 2% ON PRICE

INDUSTRIAL BUCKET

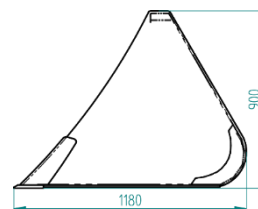
*+20 % ON PRICE, BASED ON WIDTH

- **COVER** - 6MM
- **SIDE** - 6MM
- **CUTTING EDGE** - HB500/150X16MM

Nr. Art.	Width (mm)	Weight (kg)	Capacity (m3)
A135.100	1000	180	0,42
A135.110	1100	190	0,46
A135.120	1200	200	0,50
A135.130	1300	205	0,55
A135.140	1400	215	0,59
A135.150	1500	225	0,63
A135.160	1600	235	0,67
A135.180	1800	260	0,76
A135.200	2000	285	0,84
A135.220	2200	300	0,92
A135.240	2400	320	1,01
A135.250	2500	325	1,05

VOLUME BUCKET XL

INDEX: **A113**



FEATURES

- **COVER** - 5MM
- **SIDE** - 6MM
- **CUTTING EDGE** - HB500/150X16MM

OPTIONS

- **BOLT-ON TEETH** + 15 €
- **ROUND BOTOM (INSTEAD OF RIB)** + 5% ON PRICE
- **OUTSIDE ROUNDED SIDE WALL** + 2% ON PRICE

INDUSTRIAL BUCKET

*+20 % ON PRICE, BASED ON WIDTH

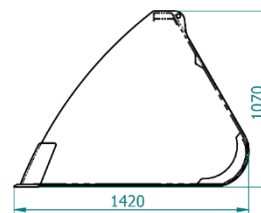
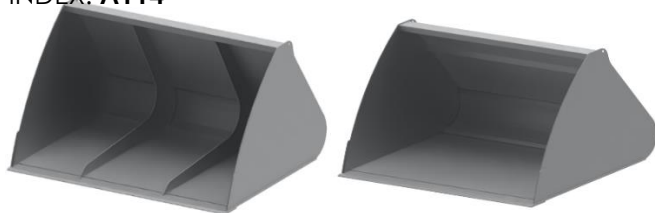
- **COVER** - 6MM
- **SIDE** - 8MM
- **CUTTING EDGE** - HB500/150X20MM

Nr. Art.	Width (mm)	Weight (kg)	Capacity (m3)
A113.160	1600	270	1,01
A113.180	1800	290	1,13
A113.200	2000	320	1,26
A113.220	2200	340	1,39
A113.230	2300	360	1,45
A113.240	2400	370	1,51
A113.250	2500	380	1,58

BUCKETS

VOLUME BUCKET XXL

INDEX: **A114**



FEATURES

- **COVER** - 6MM
- **SIDE** - 8MM
- **CUTTING EDGE** - HB500/150X20MM

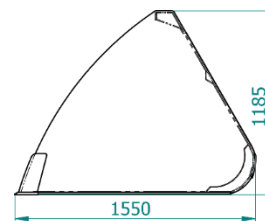
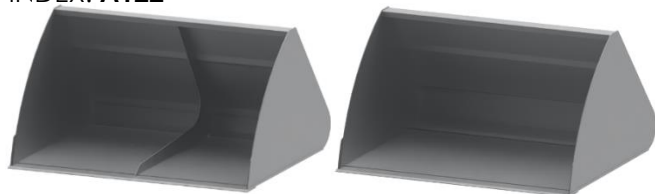
OPTIONS

- **ROUND BOTOM (INSTEAD OF RIB)** + 5% ON PRICE
- **OUTSIDE ROUNDED SIDE WALL** + 2% ON PRICE

Nr. Art.	Width (mm)	Weight (kg)	Capacity (m3)
A114.180	1800	550	1,62
A114.200	2000	560	1,80
A114.220	2200	570	1,98
A114.230	2300	580	2,07
A114.240	2400	590	2,16
A114.250	2500	600	2,25

VOLUME BUCKET XXXL

INDEX: **A122**



FEATURES

- **COVER** - 6MM
- **SIDE** - 8MM
- **CUTTING EDGE** - HB500/150X20MM

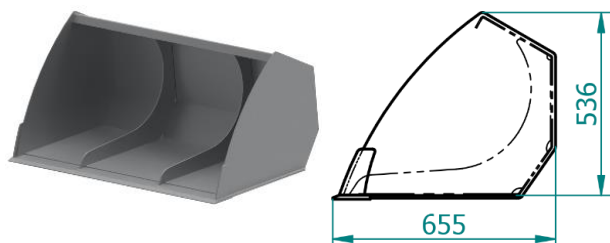
OPTIONS

- **ROUND BOTOM (INSTEAD OF RIB)** + 5% ON PRICE
- **OUTSIDE ROUNDED SIDE WALL** + 2% ON PRICE

Nr. Art.	Width (mm)	Weight (kg)	Capacity (m3)
A122.180	1800	590	2,03
A122.200	2000	600	2,26
A122.220	2200	610	2,49
A122.230	2300	620	2,60
A122.240	2400	640	2,71
A122.250	2500	660	2,83

AVANT STANDARD BUCKET

INDEX: **A115**



FEATURES

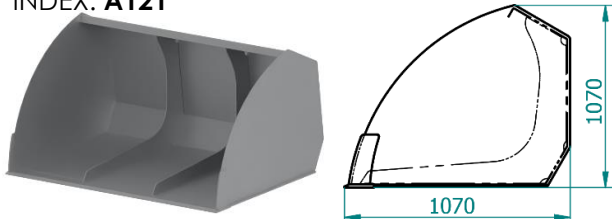
- **COVER** - 4MM
- **SIDE** - 4MM
- **CUTTING EDGE** - HB500/110X12MM

Nr. Art.	Width (mm)	Weight (kg)	Capacity (m3)
A115.080	800	65	0,18
A115.090	900	70	0,21
A115.100	1000	75	0,23
A115.110	1100	80	0,25
A115.120	1200	85	0,28
A115.130	1300	90	0,30
A115.140	1400	95	0,32
A115.150	1500	100	0,35
A115.160	1600	105	0,37

BUCKETS

AVANT VOLUME BUCKET

INDEX: **A121**



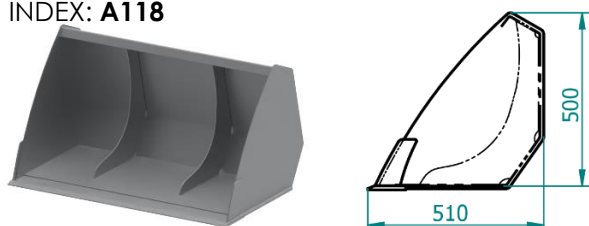
FEATURES

- **COVER** - 4MM
- **SIDE** - 4MM
- **CUTTING EDGE** - HB500/110X12MM

Nr. Art.	Width (mm)	Weight (kg)	Capacity (m3)
A121.080	800	95	0,32
A121.090	900	100	0,36
A121.100	1000	105	0,40
A121.110	1100	110	0,44
A121.120	1200	115	0,48
A121.130	1300	120	0,52
A121.140	1400	125	0,56
A121.150	1500	130	0,60
A121.160	1600	135	0,64

PIXY BUCKET MINI SQQ LOADER

INDEX: **A118**



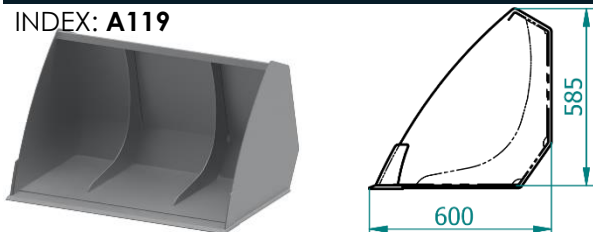
FEATURES

- **COVER** - 4MM
- **SIDE** - 4MM
- **CUTTING EDGE** - HB500/110X12MM

Nr. Art.	Width (mm)	Weight (kg)	Capacity (m3)
A118.080	800	40	0,12
A118.090	900	43	0,14
A118.100	1000	45	0,15
A118.110	1100	50	0,17
A118.120	1200	55	0,18
A118.130	1300	60	0,20
A118.140	1400	65	0,21
A118.150	1500	70	0,23
A118.160	1600	75	0,24

PIXY BUCKET STANDARD

INDEX: **A119**



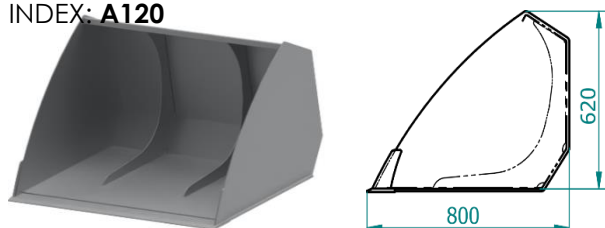
FEATURES

- **COVER** - 4MM
- **SIDE** - 4MM
- **CUTTING EDGE** - HB500/110X12MM

Nr. Art.	Width (mm)	Weight (kg)	Capacity (m3)
A119.080	800	62	0,17
A119.090	900	67	0,19
A119.100	1000	72	0,21
A119.110	1100	76	0,23
A119.120	1200	81	0,25
A119.130	1300	86	0,27
A119.140	1400	91	0,29
A119.150	1500	96	0,32
A119.160	1600	100	0,34

PIXY VOLUME BUCKET

INDEX: **A120**



FEATURES

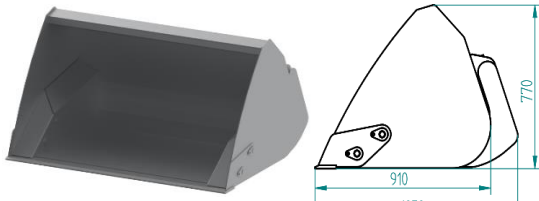
- **COVER** - 4MM
- **SIDE** - 4MM
- **CUTTING EDGE** - HB500/110X12MM

Nr. Art.	Width (mm)	Weight (kg)	Capacity (m3)
A120.080	800	82	0,26
A120.090	900	87	0,29
A120.100	1000	90	0,32
A120.110	1100	95	0,35
A120.120	1200	100	0,38
A120.130	1300	105	0,42
A120.140	1400	110	0,45
A120.150	1500	115	0,48
A120.160	1600	120	0,51

HIGH TIP BUCKETS

HIGH TIP BUCKET

INDEX: **A201**



FEATURES

- **COVER** - 5MM
- **SIDE** - 6MM
- **CUTTING EDGE** - HB500/110X16MM

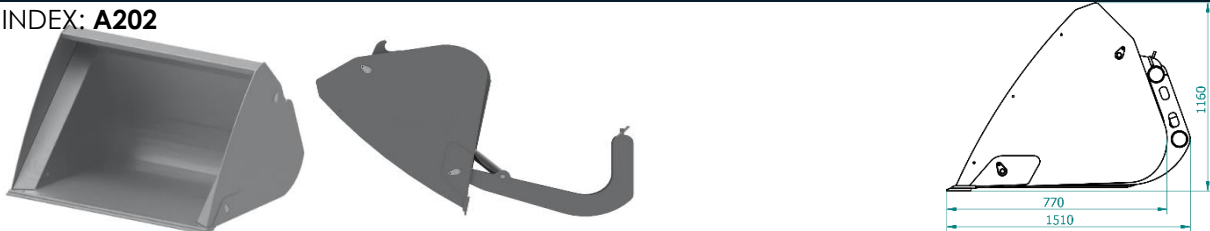
OPTIONS

- **CUTTING EDGE** - HB500/150X16MM
- - 45€/M

Nr. Art.	Width (mm)	Weight (kg)	Capacity (m3)
A201.090	900	270	0,38
A201.100	1000	280	0,42
A201.110	1100	290	0,46
A201.120	1200	300	0,50
A201.130	1300	300	0,55
A201.140	1400	320	0,59
A201.150	1500	340	0,63
A201.160	1600	360	0,67
A201.180	1800	380	0,76
A201.200	2000	400	0,84
A201.220	2200	430	0,92
A201.240	2400	460	1,01
A201.250	2500	480	1,05

HIGH TIP BUCKET XL

INDEX: **A202**



FEATURES

- **COVER** - 6MM
- **SIDE** - 8MM
- **CUTTING EDGE** - HB500/150X16MM

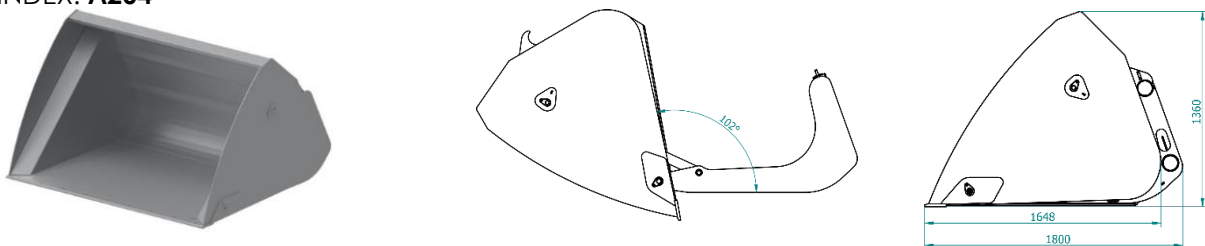
OPTIONS

- **CUTTING EDGE** - HB500/150X20MM - 85€/M

Nr. Art.	Width (mm)	Weight (kg)	Capacity (m3)
A202.160	1600	610	1,44
A202.180	1800	660	1,62
A202.200	2000	720	1,80
A202.220	2200	780	1,98
A202.240	2400	820	2,16
A202.250	2500	850	2,25

HIGH TIP BUCKET XXL

INDEX: **A204**



FEATURES

- **COVER** - 6MM
- **SIDE** - 8MM
- **CUTTING EDGE** - HB500/150X16MM

OPTIONS

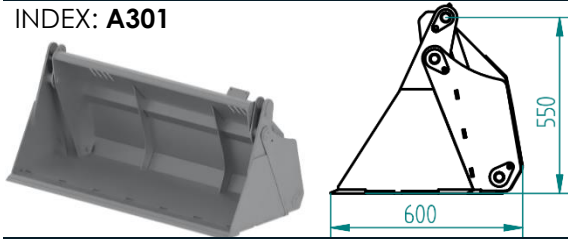
- **CUTTING EDGE** - HB500/150X20MM - 85€/M

Nr. Art.	Width (mm)	Weight (kg)	Capacity (m3)
A204.180	1800	1080	2,19
A204.200	2000	1130	2,43
A204.220	2200	1180	2,67
A204.240	2400	1230	2,92
A204.250	2500	1280	3,04
A204.270	2700	1310	3,30

HIGH TIP BUCKETS

4IN1 MINI BUCKET S

INDEX: **A301**



Nr. Art.	Width (mm)	Weight (kg)	Capacity (m3)
A301.090	900	160	0,23
A301.100	1000	170	0,25
A301.110	1100	180	0,28
A301.120	1200	200	0,30
A301.140	1400	220	0,35
A301.150	1500	230	0,38
A301.160	1600	240	0,40

FEATURES

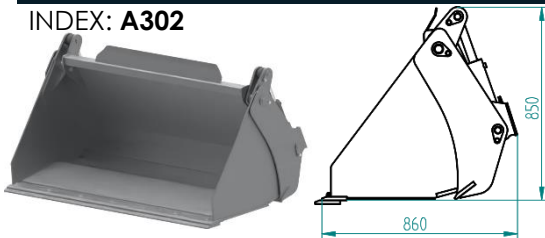
- DESIGNED FOR MINI LOADER –AVANT/PIXY
- **COVER** - 5MM
- **SIDE** - 10MM
- **CUTTING EDGE** - HB500/110X12MM

OPTIONS

- **CUTTING EDGE** – HB500/150X16MM – 45 €/M
- **BOLT-ON TEETH** – 15 €

4IN1 BUCKET L

INDEX: **A302**



Nr. Art.	Width (mm)	Weight (kg)	Capacity (m3)
A302.100	1000	255	0,31
A302.110	1100	270	0,34
A302.120	1200	285	0,37
A302.140	1400	310	0,43
A302.150	1500	325	0,47
A302.160	1600	350	0,50
A302.180	1800	370	0,56
A302.200	2000	400	0,62
A302.220	2200	430	0,68
A302.230	2300	445	0,71
A302.240	2400	460	0,74

FEATURES

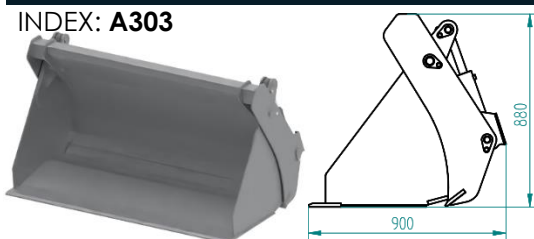
- **COVER** - 5MM
- **SIDE** - 10MM
- **CUTTING EDGE** - HB500/110X16MM

OPTIONS

- **CUTTING EDGE** – HB500/150X16MM – 45 €/M
- **BOLT-ON TEETH** – 15 €

4IN1 BUCKET XL

INDEX: **A303**



Nr. Art.	Width (mm)	Weight (kg)	Capacity (m3)
A303.160	1600	400	0,54
A303.180	1800	440	0,61
A303.200	2000	480	0,68
A303.220	2200	520	0,75
A303.230	2300	560	0,78
A303.240	2400	590	0,82
A303.250	2500	620	0,85

FEATURES

- **COVER** - 5MM
- **SIDE** - 10MM
- **CUTTING EDGE** - HB500/110X16MM

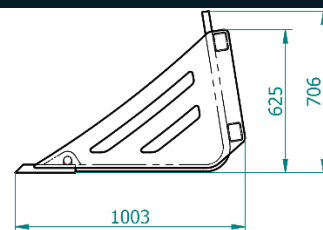
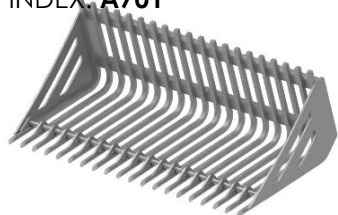
OPTIONS

- **CUTTING EDGE** – HB500/150X16MM – 45 €/M
- **BOLT-ON TEETH** – 15 €

STONE BUCKETS

STONE BUCKET

INDEX: **A701**



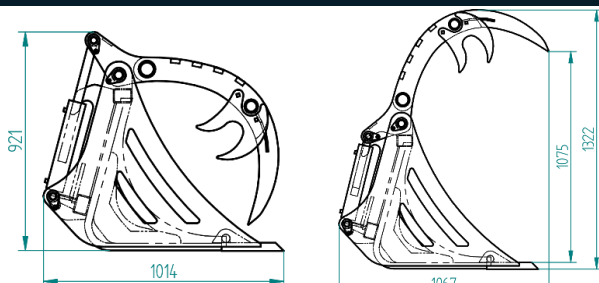
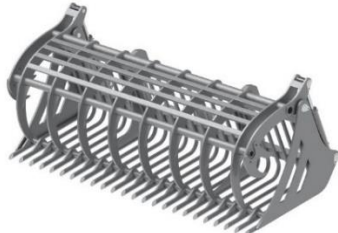
FEATURES

- **SIDE** - 15MM
- **IRON ROD** - Ø 30MM
- **BAR SPACING** 70MM

Nr. Art.	Width (mm)	Weight (kg)	Capacity (m3)
A701.140	1400	260	0,36
A701.160	1600	280	0,42
A701.180	1800	290	0,47
A701.200	2000	310	0,52
A701.220	2200	340	0,57
A701.240	2400	375	0,62

STONE BUCKET

INDEX: **A707**



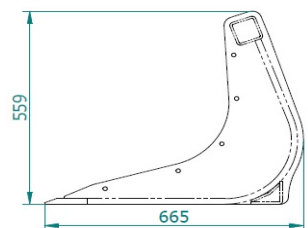
FEATURES

- **SIDE** - 15MM
- **IRON ROD** - Ø 30MM
- **BAR SPACING** 70MM

Nr. Art.	Width (mm)	Weight (kg)	Capacity (m3)
A707.140	1400	370	0,54
A707.160	1600	415	0,62
A707.180	1800	460	0,70
A707.200	2000	510	0,78
A707.220	2200	550	0,85
A707.240	2400	600	0,93

STONE BUCKET MINI

INDEX: **A702**



FEATURES

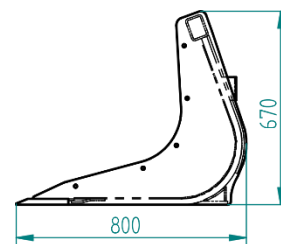
- **SIDE** - 10MM
- **CUTTING EDGE** - HB500/110X16MM
- **IRON ROD** - Ø 16MM
- **BAR SPACING** 40MM

Nr. Art.	Width (mm)	Weight (kg)	Capacity (m3)
A702.090	900	95	0,12
A702.100	1000	100	0,13
A702.110	1100	105	0,14
A702.120	1200	110	0,16
A702.130	1300	115	0,17
A702.140	1400	120	0,18
A702.150	1500	125	0,20
A702.160	1600	130	0,21

STONE BUCKETS

STONE BUCKET

INDEX: **A706**



FEATURES

- **SIDE** - 10MM
- **CUTTING EDGE** - HB500/150X20MM
- **IRON ROD** - Ø 20MM
- **BAR SPACING** 40MM

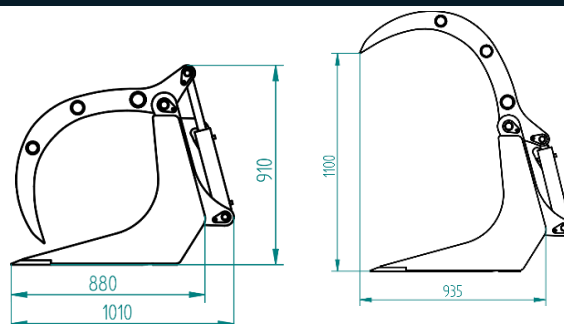
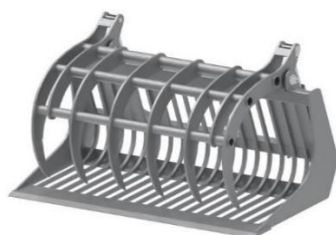
OPTIONS

- **INNER PLATE** – 4MM

Nr. Art.	Width (mm)	Weight (kg)	Capacity (m3)
A706.090	900	135	0,17
A706.100	1000	140	0,19
A706.110	1100	145	0,21
A706.120	1200	150	0,23
A706.130	1300	160	0,25
A706.140	1400	170	0,27
A706.150	1500	180	0,29
A706.160	1600	190	0,30
A706.180	1800	200	0,34
A706.200	2000	210	0,38
A706.220	2200	220	0,42
A706.240	2400	230	0,46

STONE BUCKET

INDEX: **A708**



FEATURES

- **SIDE** - 10MM
- **CUTTING EDGE** - HB500/150X20MM
- **IRON ROD** - Ø 20MM
- **BAR SPACING** 40MM

OPTIONS

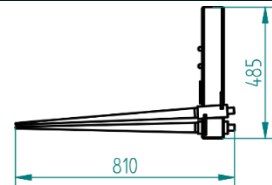
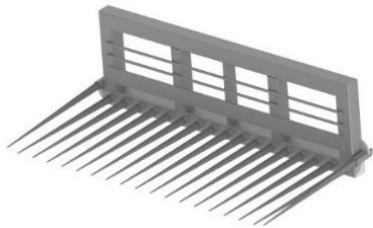
- **INNER PLATE** – 4MM

Nr. Art.	Width (mm)	Weight (kg)	Capacity (m3)
A708.090	900	250	0,35
A708.100	1000	270	0,39
A708.110	1100	290	0,43
A708.120	1200	310	0,47
A708.130	1300	330	0,50
A708.140	1400	350	0,54
A708.150	1500	370	0,58
A708.160	1600	390	0,62
A708.180	1800	430	0,70
A708.200	2000	470	0,78
A708.220	2200	510	0,86
A708.240	2400	560	0,93

STONE BUCKETS

STONE FORK

INDEX: **B104**



FEATURES

- **TEETH** – 1100MM
- **SPACE BETWEEN TEETH** 90MM

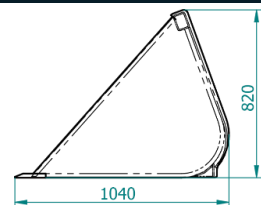
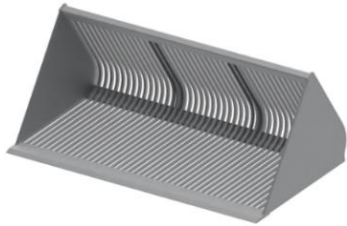
OPTIONS

- **ADDITIONAL TEETH** – 25€

Nr. Art.	Width (mm)	Weight (kg)	Teeth (pieces)
B104.090	900	65	10
B104.100	1000	71	11
B104.120	1200	85	13
B104.130	1300	93	14
B104.140	1400	100	15
B104.150	1500	108	16
B104.160	1600	115	17
B104.170	1700	130	19
B104.180	1800	140	20

POTATO/BETROOT BUCKET

INDEX: **A704**



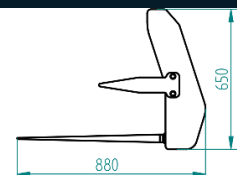
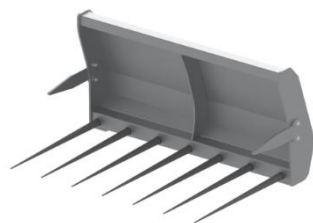
FEATURES

- **SIDE** - 10MM
- **CUTTING EDGE** - HB500/150X20MM`
- **IRON ROD** - Ø 20MM
- **BAR SPACING** 35MM

Nr. Art.	Width (mm)	Weight (kg)	Capacity (m3)
A704.140	1400	260	0,64
A704.150	1500	280	0,69
A704.160	1600	300	0,74
A704.180	1800	320	0,83
A704.200	2000	340	0,92
A704.220	2200	360	1,01
A704.240	2400	370	1,10

MANURE FORK S

INDEX: **B103**



FEATURES

- **COVER** - 4MM
- **TEETH** – 810MM
- **SPACE BETWEEN TEETH** 180MM

OPTIONS

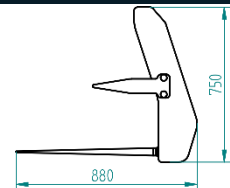
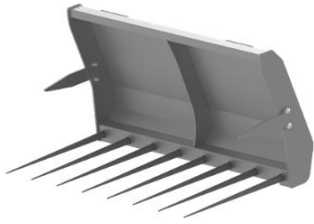
- **ADDITIONAL TEETH** – 25€

Nr. Art.	Width (mm)	Weight (kg)	Teeth (pieces)
B103.090	900	75	6
B103.100	1000	80	6
B103.110	1100	82	7
B103.120	1200	85	7
B103.130	1300	85	7
B103.140	1400	88	8
B103.150	1500	93	8
B103.160	1600	102	8
B103.180	1800	111	9

MANURE FORK

MANURE FORK

INDEX: **B101**



FEATURES

- **COVER** - 4MM
- **TEETH** - 810MM
- **SPACE BETWEEN TEETH** 180MM

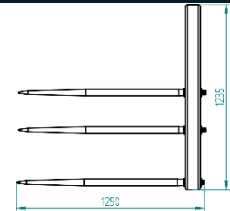
OPTIONS

- **ADDITIONAL TEETH** - 25€

Nr. Art.	Width (mm)	Weight (kg)	Teeth (pieces)
B101.140	1400	88	8
B101.150	1500	93	8
B101.160	1600	102	8
B101.180	1800	111	9
B101.200	2000	123	10
B101.220	2200	135	11
B101.230	2300	140	12
B101.240	2400	145	12

MANURE FORK XL

INDEX: **B106**



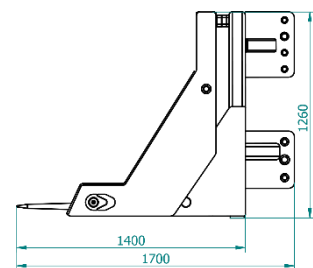
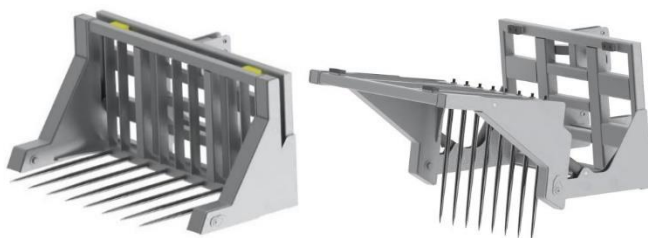
FEATURES

- **TEETH** - 1250MM
- **SPACE BETWEEN TEETH** 175-190MM

Nr. Art.	Width (mm)	Weight (kg)	Teeth (pieces)
B106.180	1800	400	10+4
B106.200	2000	420	11+4
B106.220	2200	440	12+4
B106.240	2400	480	13+4
B106.260	2600	520	14+4
B106.280	2800	560	15+4
B106.300	3000	600	16+4

MANURE FORK MAXI

INDEX: **B401**



FEATURES

- **TEETH** - 1250MM
- **SPACE BETWEEN TEETH** 230MM

OPTIONS

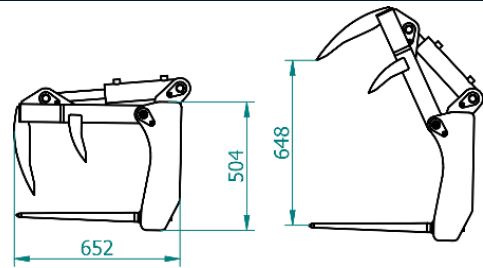
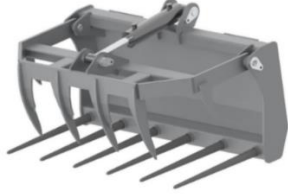
- **ADDITIONAL TEETH** - 25€

Nr. Art.	Width (mm)	Weight (kg)	Teeth (pieces)
B401.250	2500	1500	8
B401.270	2700	1620	9
B401.300	3000	1800	10

FORK WITH GRIPPER

FORK WITH GRIPPER MINI

INDEX: **B205**



FEATURES

- **COVER** - 4MM
- **TEETH** - 610MM
- **SPACE BETWEEN TEETH** 180MM

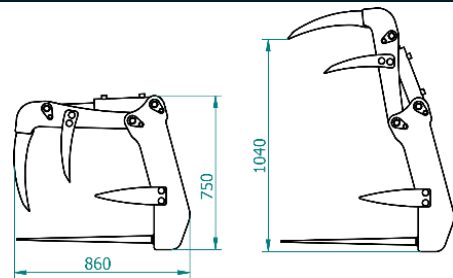
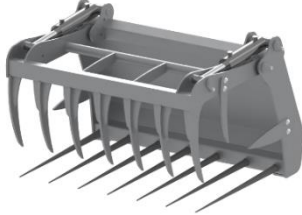
OPTIONS

- **ADDITIONAL TEETH** - 25€

Nr. Art.	Width (mm)	Weight (kg)	Capacity (m3)	Teeth (pieces)
B205.090	900	100	0,17	5/5
B205.100	1000	110	0,19	6/6
B205.110	1100	120	0,21	6/6
B205.120	1200	125	0,23	7/7
B205.130	1300	130	0,25	7/7
B205.140	1400	135	0,27	8/8
B205.150	1500	140	0,29	8/8
B205.160	1600	150	0,30	9/9

FORK WITH GRIPPER S - LOADER

INDEX: **B201**



FEATURES

- **COVER** - 4MM
- **TEETH** - 810MM
- **SPACE BETWEEN TEETH** - 180MM
- **TOP TEETH WELDED**

OPTIONS

- **SPLIT GRAB** - 125€

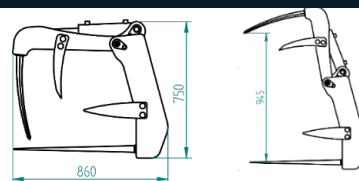
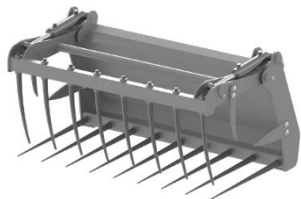


Nr. Art.	Width (mm)	Weight (kg)	Capacity (m3)	Teeth (pieces)
B201.090	900	175	0,34	5/5
B201.100	1000	185	0,38	6/6
B201.110	1100	205	0,42	6/6
B201.120A	1200	220	0,46	7/7
B201.120	1200	230	0,46	7/7
B201.130	1300	235	0,49	8/8
B201.140	1400	240	0,53	8/8
B201.150	1500	250	0,57	8/8
B201.160	1600	260	0,61	9/9
B201.180	1800	280	0,68	9/9

FORK WITH GRIPPER

FORK WITH GRIPPER S - LOADER

INDEX: **B202**



FEATURES

- **COVER** - 4MM
- **TEETH** - 810MM
- **SPACE BETWEEN TEETH** - 180MM
- **TOP TEETH** - 600MM

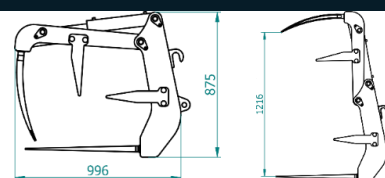
OPTIONS

- **SPLIT GRAB** - 125€

Nr. Art.	Width (mm)	Weight (kg)	Capacity (m3)	Teeth (pieces)
B202.090	900	175	0,34	4/5
B202.100	1000	185	0,38	5/6
B202.110	1100	205	0,42	5/6
B202.120A	1200	220	0,46	6/7
B202.120	1200	230	0,46	6/7
B202.130	1300	235	0,49	6/7
B202.140	1400	240	0,53	7/8
B202.150	1500	250	0,57	7/8
B202.160	1600	260	0,61	8/9
B202.180	1800	280	0,68	8/9

FORK WITH GRIPPER L - STANDARD

INDEX: **B203**



FEATURES

- **COVER** - 4MM
- **TEETH** - 810MM
- **SPACE BETWEEN TEETH** - 180MM
- **BOTTOM TEETH** 810MM
- **TOP TEETH** 680MM

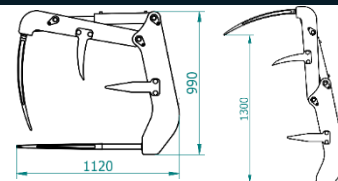
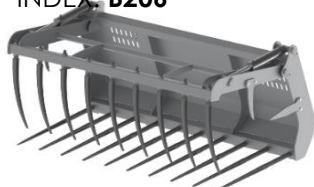
OPTIONS

- **SPLIT GRAB** - 125€

Nr. Art.	Width (mm)	Weight (kg)	Capacity (m3)	Teeth (pieces)
B203.120A	1200	240	0,62	6/7
B203.120	1200	250	0,62	6/7
B203.130	1300	255	0,68	6/7
B203.140	1400	260	0,73	7/8
B203.150	1500	270	0,78	7/8
B203.160	1600	280	0,83	8/9
B203.180	1800	300	0,94	8/9
B203.200	2000	320	1,04	9/10
B203.220	2200	340	1,14	10/11
B203.240	2400	360	1,25	11/12

FORK WITH GRIPPER XL

INDEX: **B206**



FEATURES

- **COVER** - 4MM
- **BOTTOM TEETH** - 1000MM
- **TOP TEETH** - 770MM

OPTIONS

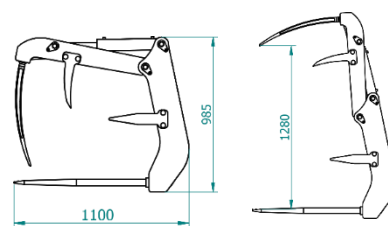
- **SPLIT GRAB** - 240€

Nr. Art.	Width (mm)	Weight (kg)	Capacity (m3)	Teeth (pieces)
B206.180	1800	360	1,26	8/9
B206.200	2000	380	1,40	9/10
B206.220	2200	400	1,54	10/11
B206.240	2400	420	1,68	11/12
B206.250	2500	440	1,75	11/12

FORK WITH GRIPPER

FORK WITH GRIPPER XL HD

INDEX: **B211**



FEATURES

- **COVER** - 5MM
- **BOTTOM TEETH** - 1000MM
- **TOP TEETH** - 770MM

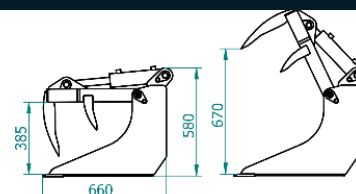
OPTIONS

- **ADDITIONAL TEETH** - 25€
- **SPLIT GRAB** - 240€
- **TOP TEETH ARE WELDED**

Nr. Art.	Width (mm)	Weight (kg)	Capacity (m3)	Teeth (pieces)
B211.180	1800	450	1,26	8/9
B211.200	2000	470	1,40	9/10
B211.220	2200	500	1,54	10/11
B211.240	2400	530	1,68	11/12
B211.250	2500	550	1,75	11/12

BUCKET WITH GRIPPER MINI

INDEX: **A503**



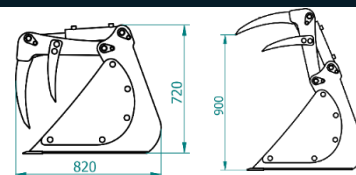
FEATURES

- **COVER** - 4MM
- **SIDE** - 10MM
- **CUTTING EDGE** - HB500/110X12MM

Nr. Art.	Width (mm)	Weight (kg)	Capacity (m3)	Teeth (pieces)
A503.090	900	130	0,18	4
A503.100	1000	137	0,20	5
A503.110	1100	145	0,22	5
A503.120	1200	152	0,24	6
A503.130	1300	165	0,26	6
A503.140	1400	170	0,28	7
A503.150	1500	175	0,30	7
A503.160	1600	180	0,32	8
A503.180	1800	185	0,36	8

BUCKET WITH GRIPPER S - LOADER

INDEX: **A505**



FEATURES

- **COVER** - 4MM
- **SIDE** - 10MM
- **CUTTING EDGE** - HB500/110X12MM
- **TOP TEETH ARE WELDED**

OPTIONS

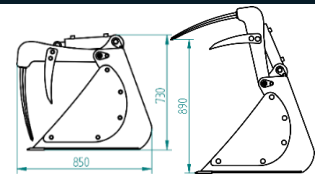
- **SPLIT GRAB** - 125€

Nr. Art.	Width (mm)	Weight (kg)	Capacity (m3)	Teeth (pieces)
A505.090	900	205	0,36	4
A505.100	1000	215	0,40	5
A505.110	1100	225	0,44	5
A505.120A	1200	245	0,48	6
A505.120	1200	255	0,48	6
A505.130	1300	260	0,52	6
A505.140	1400	265	0,56	7
A505.150	1500	275	0,60	7
A505.160	1600	290	0,64	8
A505.180	1800	320	0,72	8

BUCKET WITH GRIPPER

BUCKET WITH GRIPPER S - LOADER

INDEX: **A502**



FEATURES

- **COVER** - 4MM
- **SIDE** - 10MM
- **CUTTING EDGE** - HB500/110X12MM
- **TOP TEETH** - 600MM

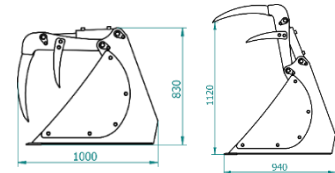
OPTIONS

- **SPLIT GRAB** - 125€

Nr. Art.	Width (mm)	Weight (kg)	Capacity (m3)	Teeth (pieces)
A502.090	900	205	0,36	4
A502.100	1000	215	0,40	5
A502.110	1100	225	0,44	5
A502.120A	1200	245	0,48	6
A502.120	1200	255	0,48	6
A502.130	1300	260	0,52	6
A502.140	1400	265	0,56	7
A502.150	1500	275	0,60	7
A502.160	1600	290	0,64	8
A502.180	1800	320	0,72	8

BUCKET WITH GRIPPER L - STANDARD

INDEX: **A501**



FEATURES

- **COVER** - 5MM
- **SIDE** - 10MM
- **CUTTING EDGE** - HB500/110X16MM
- TOP TEETH ARE WELDED

OPTIONS

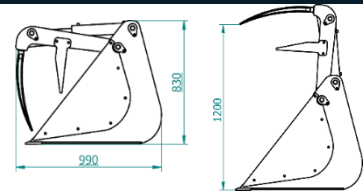
- **SPLIT GRAB** - 240€

Nr. Art.	Width (mm)	Weight (kg)	Capacity (m3)	Teeth (pieces)
A501.120A	1200	295	0,65	6
A501.120	1200	305	0,65	6
A501.130	1300	310	0,70	6
A501.140	1400	315	0,76	7
A501.150	1500	325	0,81	7
A501.160	1600	340	0,86	8
A501.180	1800	385	0,97	8
A501.200	2000	425	1,08	9
A501.220	2200	445	1,19	10

BUCKET WITH GRIPPER

BUCKET WITH GRIPPER L - STANDARD

INDEX: **A504**



FEATURES

- **COVER** - 5MM
- **SIDE** - 10MM
- **CUTTING EDGE** - HB500/110X16MM
- **TOP TEETH** - 680MM

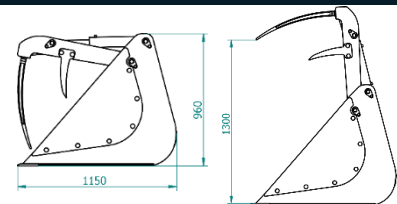
OPTIONS

- **SPLIT GRAB** - 240€

Nr. Art.	Width (mm)	Weight (kg)	Capacity (m3)	Teeth (pieces)
A504.120A	1200	295	0,65	6
A504.120	1200	305	0,65	6
A504.130	1300	310	0,70	6
A504.140	1400	315	0,76	7
A504.150	1500	325	0,81	7
A504.160	1600	340	0,86	8
A504.180	1800	385	0,97	8
A504.200	2000	425	1,08	9
A504.220	2200	445	1,19	10
A504.240	2400	470	1,30	11

BUCKET WITH GRIPPER XL

INDEX: **A512**



FEATURES

- **COVER** - 6MM
- **SIDE** - 12MM
- **CUTTING EDGE** - HB500/150X16MM
- **TOP TEETH** - 770MM

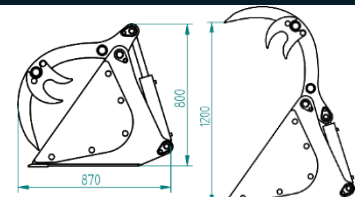
OPTIONS

- **SPLIT GRAB** - 240€

Nr. Art.	Width (mm)	Weight (kg)	Capacity (m3)	Teeth (pieces)
A512.180	1800	510	1,26	8/9
A512.200	2000	550	1,40	9/10
A512.220	2200	590	1,54	10/11
A512.240	2400	620	1,68	11/12
A512.250	2500	640	1,75	11/12

BUCKET WITH GRIPPER S

INDEX: **A404**



GRUNDAUSSTATUNG

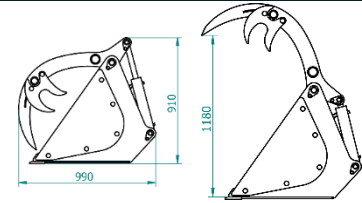
- **COVER** 5MM
- **SIDE** - 10MM
- **CUTTING EDGE** - HB500/110X16MM
- **TOP TEETH** - 12MM

Nr. Art.	Width (mm)	Weight (kg)	Capacity (m3)	Teeth (pieces)
A404.090	900	240	0,31	3
A404.100	1000	250	0,34	3
A404.110	1100	260	0,37	4
A404.120	1200	265	0,41	4
A404.130	1300	275	0,44	5
A404.140	1400	290	0,48	5
A404.150	1500	305	0,51	6
A404.160	1600	320	0,54	6
A404.180	1800	340	0,61	7

BUCKETS WITH GRAB

BUCKET WITH GRAB L

INDEX: **A413**



FEATURES

- **COVER** - 5MM
- **SIDE** - 10MM
- **CUTTING EDGE** - HB500/110X16MM
- **TOP TEETH** - ARE WELDED

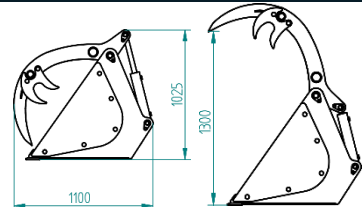
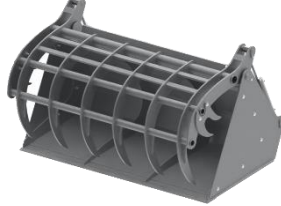
OPTIONS

- **CUTTING EDGE** - HB500/150X16MM - 45€/M

Nr. Art.	Width (mm)	Weight (kg)	Capacity (m3)	Teeth (pieces)
A413.120	1200	320	0,53	4
A413.130	1300	335	0,57	4
A413.140	1400	350	0,62	4
A413.150	1500	365	0,66	5
A413.160	1600	380	0,70	5
A413.180	1800	395	0,79	6
A413.200	2000	420	0,88	6
A413.220	2200	450	0,97	7
A413.240	2400	480	1,06	7

BUCKET WITH GRAB XL

INDEX: **A417**



FEATURES

- **COVER** - 5MM
- **SIDE** - 10MM
- **CUTTING EDGE** - HB500/110X16MM
- **TOP TEETH** - ARE WELDED

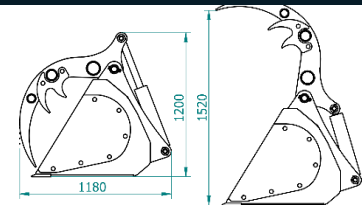
OPTIONS

- **CUTTING EDGE** - HB500/150X16MM - 45€/M
- **PRESSURE LIMITING VALVE (DBV)** - 130€

Nr. Art.	Width (mm)	Weight (kg)	Capacity (m3)	Teeth (pieces)
A417.160	1600	540	0,86	5
A417.180	1800	570	0,97	6
A417.200	2000	590	1,08	6
A417.220	2200	610	1,19	7
A417.230	2300	630	1,24	7
A417.240	2400	650	1,30	7

BUCKET WITH GRAB XXL

INDEX: **A412**



FEATURES

- **COVER** - 6MM
- **SIDE** - 12MM
- **CUTTING EDGE** - HB500/150X16MM
- **TOP TEETH** - ARE WELDED

OPTIONS

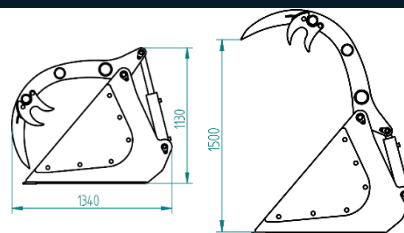
- **CUTTING EDGE** - HB500/150X20MM - 45€/M
- **PRESSURE LIMITING VALVE (DBV)** - 130€

Nr. Art.	Width (mm)	Weight (kg)	Capacity (m3)	Teeth (pieces)
A412.180	1800	630	1,00	6
A412.200	2000	690	1,1	6
A412.220	2200	750	1,2	7
A412.230	2300	780	1,25	7
A412.240	2400	810	1,30	7
A412.250	2500	840	1,35	7

BUCKET WITH GRAB

BUCKET WITH GRAB XXL

INDEX: **A403**



FEATURES

- **COVER** - 6MM
- **SIDE** - 12MM
- **CUTTING EDGE** - HB500/150X16MM
- **TOP TEETH** - ARE WELDED

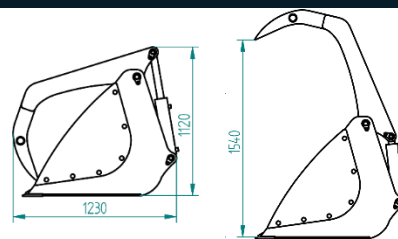
OPTIONS

- **CUTTING EDGE** - HB500/150X20MM - 45€/M
- **PRESSURE LIMITING VALVE (DBV)** - 130€

Nr. Art.	Width (mm)	Weight (kg)	Capacity (m3)	Teeth (pieces)
A403.180	1800	740	1,44	6
A403.200	2000	750	1,60	6
A403.220	2200	780	1,76	7
A403.230	2300	790	1,84	7
A403.240	2400	810	1,92	7
A403.250	2500	820	2,00	8

BUCKET WITH GRAB XXL

INDEX: **A515**



FEATURES

- **COVER** - 6MM
- **SIDE** - 12MM
- **CUTTING EDGE** - HB500/150X16MM
- **TOP TEETH** 18MM

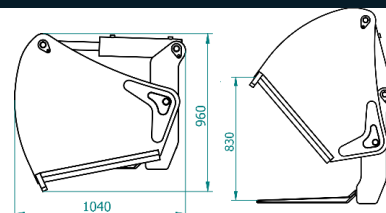
OPTIONS

- **CUTTING EDGE** - HB500/150X20MM - 45€/M
- **PRESSURE LIMITING VALVE (DBV)** - 130€

Nr. Art.	Width (mm)	Weight (kg)	Capacity (m3)	Teeth (pieces)
A515.180	1800	660	1,44	6
A515.200	2000	670	1,60	6
A515.220	2200	680	1,76	7
A515.230	2300	700	1,84	7
A515.240	2400	720	1,92	7
A515.250	2500	750	2,00	8

SILAGE CUTTER

INDEX: **C101**



FEATURES

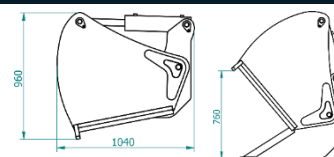
- **SIDE** - 10MM
- **FRONT CUTTING KNIFE** BOLT-ON (NOT WELDED)

Nr. Art.	Width (mm)	Weight (kg)	Capacity (m3)	Teeth (pieces)
C101.100	1000	420	0,46	8
C101.120	1200	460	0,55	9
C101.140	1400	500	0,64	10
C101.160	1600	550	0,74	11
C101.180	1800	600	0,83	12
C101.200	2000	650	0,92	13
C101.220	2200	700	1,01	14

SILAGE CUTTER

SILAGE CUTTER BUCKET

INDEX: **C201**



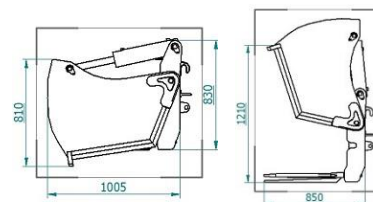
FEATURES

- **SIDE** – 10MM
- **COVER** – 6MM
- **CUTTING EDGE** – HB500/110X16MM
- FRONT CUTTING KNIFE BOLT-ON

Nr. Art.	Width (mm)	Weight (kg)	Capacity (m3)
C201.100	1000	450	0,44
C201.120	1200	490	0,53
C201.140	1400	530	0,62
C201.160	1600	590	0,70
C201.180	1800	630	0,79
C201.200	2000	680	0,88
C201.220	2200	730	0,97

SILOSCHNEIDGABEL 3IN1

INDEX: **C103**



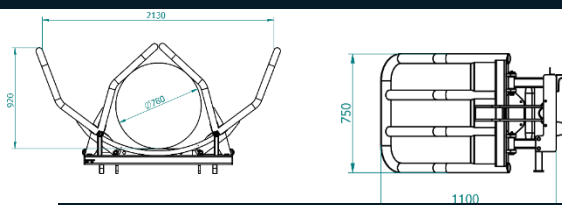
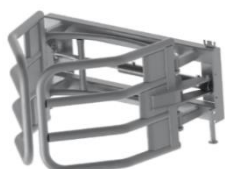
GRUNDAUSSTATTUNG

- **SEITENWAND** – 10MM
- **MANTEBLECH** – 6MM
- **SCHURSCHIENE**
- HB500/110X16MM

Nr. Art.	Arbeitsbreite (mm)	Eigengewicht (kg)	Volumen (m3)
C103.160	1600	590	0,80
C103.180	1800	630	0,90

BALE GRIPPER - ONE CYLINDER

INDEX: **D101**



FEATURES

- **PIPE** – Ø 60 x 3MM

OPTIONS

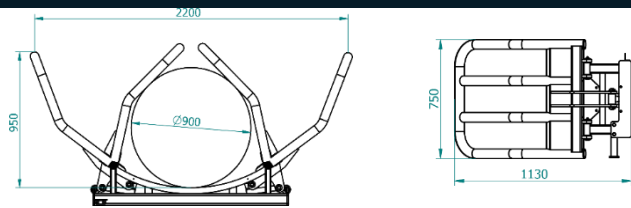
- **PRESSURE LIMITING VALVE (DHV)**– 90 €

Nr. Art.	Capacity	Weight (kg)
D101	1000	190

BALE GRIPPER

BALE GRIPPER - TWO CYLINDER

INDEX: D105



FEATURES

- PIPE – Ø 60 x 3MM

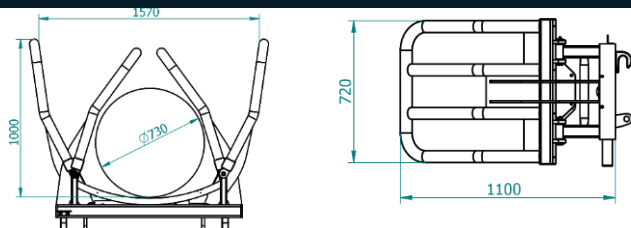
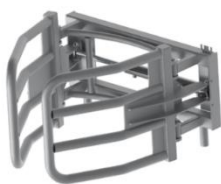
Nr. Art.	Capacity	Weight (kg)
D105	1000	195

OPTIONS

- PRESSURE LIMITING VALVE (DHV) – 90 €

BALE GRIPPER – ONE CYLINDER

INDEX: D107



FEATURES

- PIPE – Ø 60 x 3MM

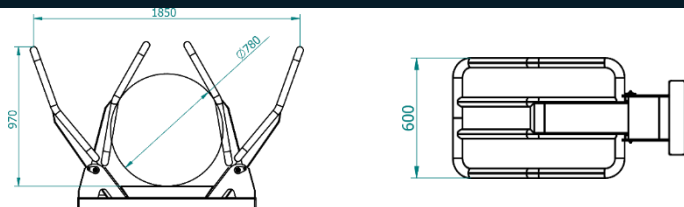
Nr. Art.	Capacity	Weight (kg)
D107	1000	165

OPTIONS

- PRESSURE LIMITING VALVE (DHV) – 90 €

BALE GRIPPER ONE CYLINDER PRO

INDEX: D109



FEATURES

- PIPE – Ø 60 x 3MM

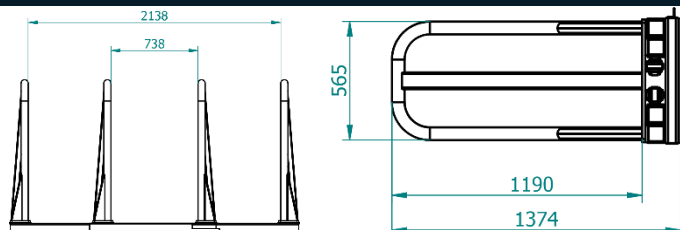
Nr. Art.	Capacity	Weight (kg)
D109	1000	220

OPTIONS

- PRESSURE LIMITING VALVE (DHV) – 90 €

SQUARE BALE GRIPPER

INDEXES: D103



FEATURES

- PIPE – Ø 60 x 3MM

Nr. Art.	Capacity	Weight (kg)
D103	1000	220

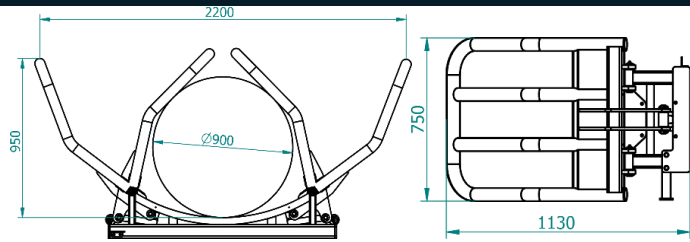
OPTIONS

- PRESSURE LIMITING VALVE (DHV) – 90 €

BALE GRIPPER

BALE GRIPPER - TWO CYLINDER

INDEX: D105



FEATURES

- PIPE – Ø 60 x 3MM

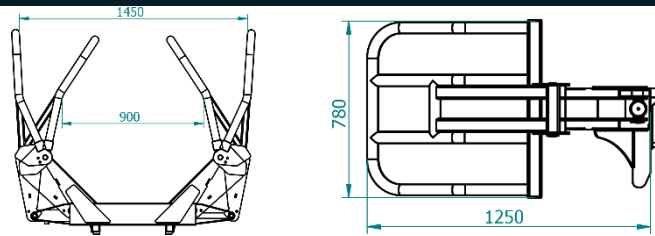
Nr. Art.	Capacity	Weight (kg)
D105	1000	195

OPTIONS

- PRESSURE LIMITING VALVE (DHV) – 90 €

BALE GRIPPER - ONE CYLINDER MINI

INDEX: D108



FEATURES

- PIPE – Ø 48 x 3MM

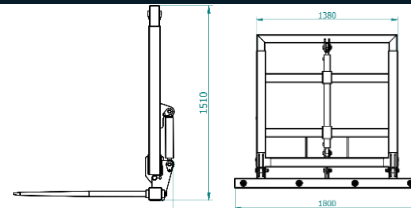
Nr. Art.	Capacity	Weight (kg)
D108	1000	130

OPTIONS

- PRESSURE LIMITING VALVE (DHV) – 90 €

BALE TRANSPORTER

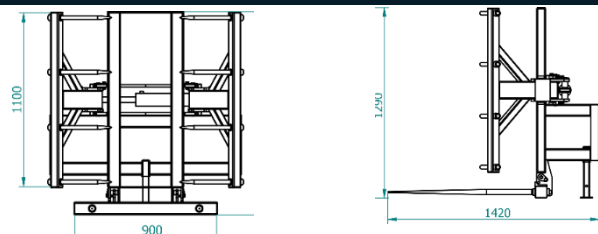
INDEX: D203



Nr. Art.	Weight [kg]	Version
D203	260	Standard

VERTICAL BALE GRIPPER

INDEX: D111



Nr. Art.	Weight [kg]	Version
D111.001	180	Standard
D111.002	220	With bottom arm

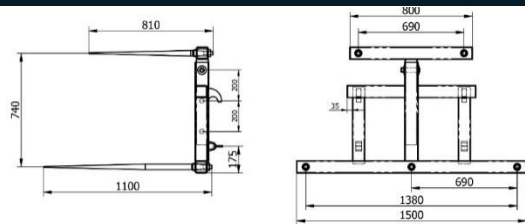
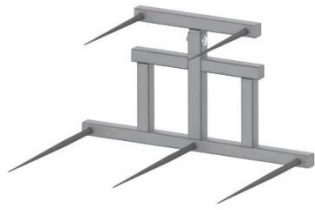
OPTIONS

- BOTTOM ARM WITH TEETH – 240€

BALE GRIPPER

BALE FORK WITH ADJUSTABLE ARM

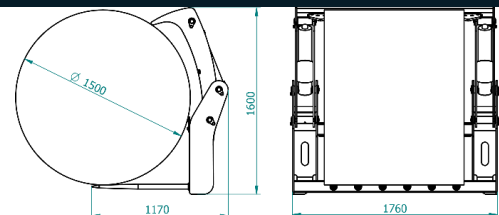
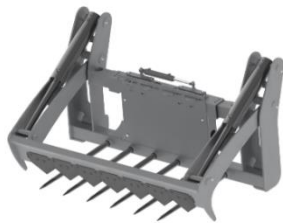
INDEX: **D509**



Nr. Art.	Version
D509	Standard

BALE CUTTER

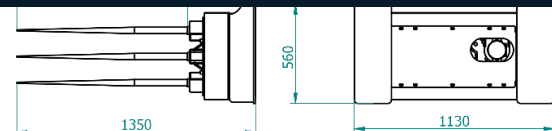
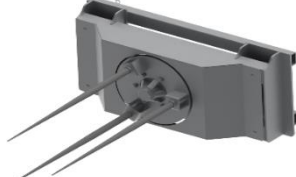
INDEX: **D302**



Nr. Art.	Capacity [kg]	Weight (kg)
D302	1000	400

BALE UNWINDER

INDEX: **D601**



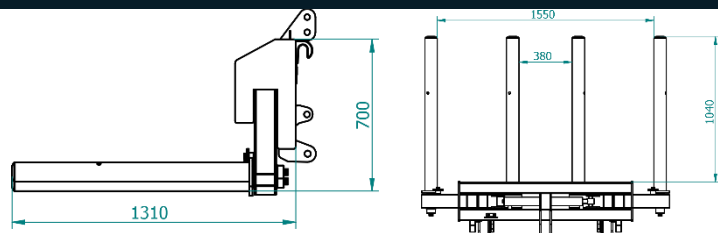
Nr. Art.	Capacity [kg]	Weight (kg)
D601	1000	180

FEATURES

- **3 TEETH – 1200MM**

HYDRAULIC BALE TRANSPORTER

INDEX: **D201**



FEATURES

- **2 TEETH – 1200MM**

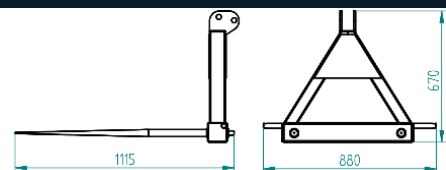
OPTIONS

- **PRESSURE LIMITING VALVE (DHV) – 90 €**

Nr. Art.	Capacity [kg]	Weight (kg)
D201	1000	195

BALE FORK

INDEX: **D503**



FEATURES

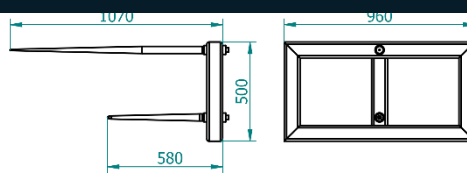
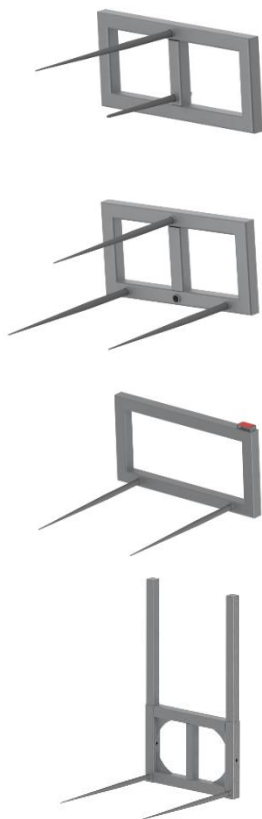
- **2 TEETH – 1100MM**
- **MOUNTING – 3 PUNKT KAT II**

Nr. Art.	Capacity	Weight (kg)
D503	800	60

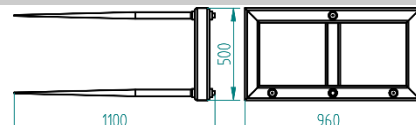
BALE FORKS

BALE FORK

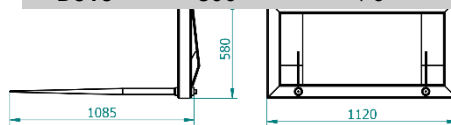
INDEX: D502, D508, D510, D513



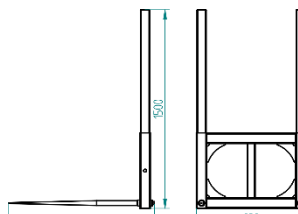
Nr. Art.	Capacity	Weight (kg)
D508	800	60



Nr. Art.	Capacity	Weight (kg)
D510	800	70



Nr. Art.	Capacity	Weight (kg)
D502	800	70



Nr. Art.	Capacity	Weight (kg)
D513	800	80

FEATURES

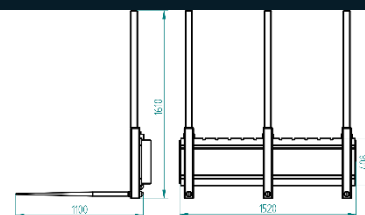
- **TEETH** – 600/810/1100MM

OPTIONS

- INSERTABLE PROTECTIVE PROFILES
- ADDITIONAL TEETH
- DIFFERENT LENGTH
- TEETH PLACED ON TOP OF EACH OTHER

STRAW BALE TRANSPORTER

INDEX: D504



Nr. Art.	Capacity	Weight (kg)
D504	1500	150

FEATURES

- **2 TEETH** – 1100MM
- **WORKING WIDTH** – 1500MM
- **INSERTABLE PROTECTIVE PROFILES**

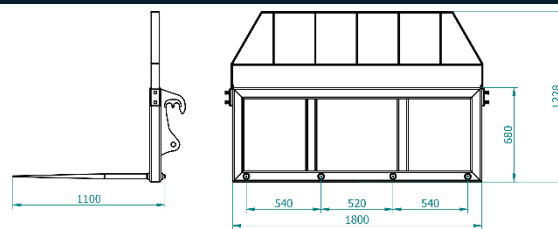
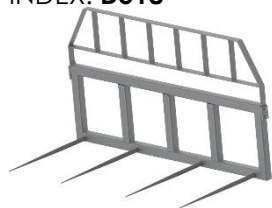
OPTIONS

- **ADDITIONAL ADJUSTABLE ELEMENT WITH TEETH** – 175 €
- **TEETH 1200MM** – 1200M

WOOD GRIPPERS

STRAW BALE TRANSPORTER

INDEX: **D518**



FEATURES

- **4 TEETH** – 1100MM
- **WORKING WIDTH** – 1800MM

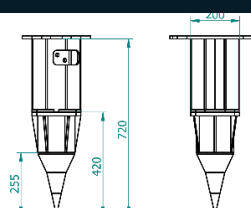
Nr. Art.	Capacity	Weight (kg)
D518	1500	180

OPTIONS

- **TEETH**– 1200MM
- **BOLT-ON PROTECTIVE COVER** – 120 €

HYDRAULIC WOOD SPLITTER

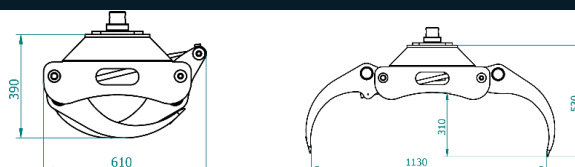
INDEX: **R217**



Nr. Art.	Weight (kg)	Version
R217.001	170	Fi 120MM
R217.002	250	Fi 170MM

WOOD GRIPPER

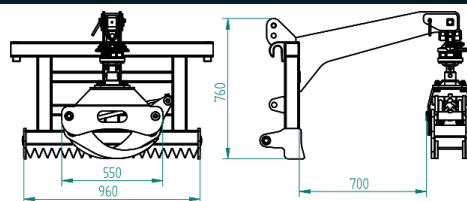
INDEX: **J309**



Nr. Art.	Capacity (kg)	Weight (kg)
J309	700	65

WOOD GRIPPER

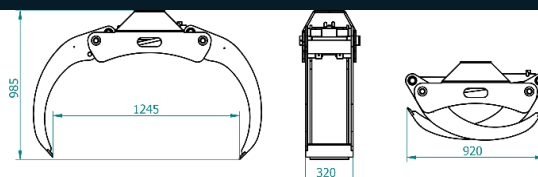
INDEX: **J308**



Nr. Art.	Capacity (kg)	Weight (kg)
J308	800	190

WOOD GRIPPER

INDEX: **J311**

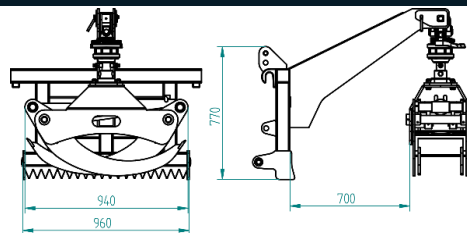


Nr. Art.	Capacity (kg)	Weight (kg)
J311	1000	180

WOOD GRIPPERS

WOOD GRIPPER

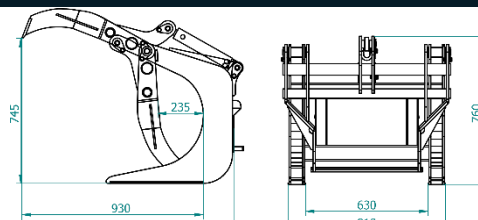
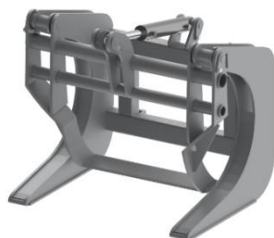
INDEX: J310



Nr. Art.	Capacity (kg)	Weight (kg)
J310	800	190

WOOD GRIPPER MINI

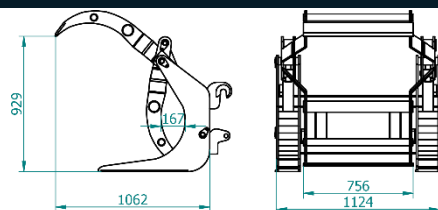
INDEX: J206



Nr. Art.	Capacity (kg)	Weight (kg)
J206	1000	150

WOOD GRIPPER

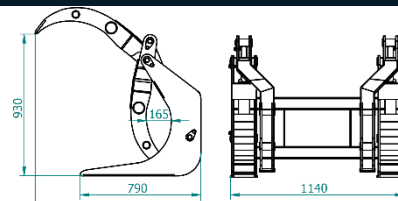
INDEX: J202



Nr. Art.	Capacity (kg)	Weight (kg)
J202	1000	220

WOOD GRIPPER

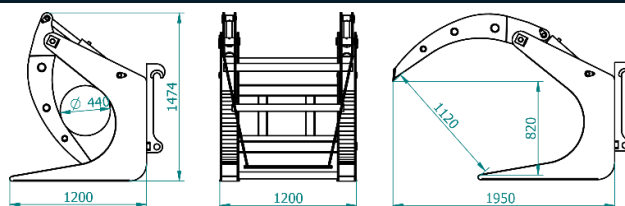
INDEX: J204



Nr. Art.	Capacity (kg)	Weight (kg)
J204	1000	220

WOOD GRIPPER XL

INDEX: J207

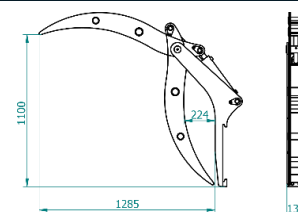


Nr. Art.	Capacity (kg)	Weight (kg)
J207	1500	510

PALLET FORKS

WOOD GRIPPER

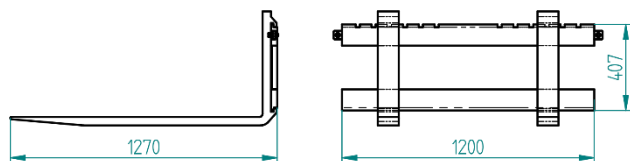
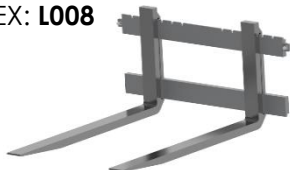
INDEX: J102



Nr. Art.	Capacity (kg)	Weight (kg)
J102	1000	66

PALLET FORKS ISO FEM II

INDEX: L008



FEATURES

- TINE LENGTH – 1200MM
- GUIDE RAIL – 1200MM
- GUIDE RAIL MADE FROM ROD 30MM

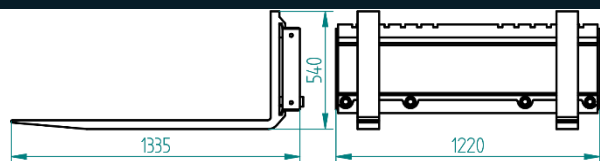
Nr. Art.	Capacity (kg)	Weight (kg)
L008.160	1600	145
L008.200	2000	160
L008.250	2500	195

OPTIONS

- BOLT-ON PROTECTIVE COVER – 80€

PALLET FORKS ISO FEM II

INDEX: L007



FEATURES

- TINE LENGTH – 1200MM
- GUIDE RAIL – 1200MM
- GUIDE RAIL BUILS AS BASE FRAME FROM PROFILE 80X80MM
- WITH 4PCS OF BUSHING FOR BALE

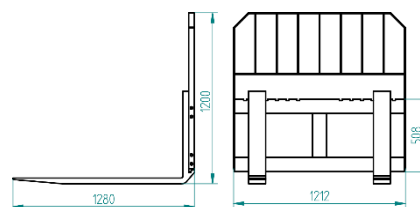
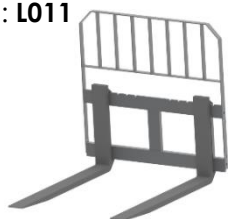
Nr. Art.	Capacity (kg)	Weight (kg)
L007.160	1600	145
L007.200	2000	160
L007.250	2500	195

OPTIONS

- BOLT-ON PROTECTIVE COVER – 80€

PALLET FORKS ISO FEM III

INDEX: L011



FEATURES

- TINE LENGTH – 1200MM
- GUIDE RAIL – 1200MM
- GUIDE RAIL MADE FROM ROD 40MM

Nr. Art.	Capacity (kg)	Weight (kg)
L011.350	3500	230

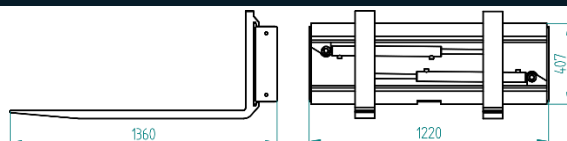
OPTIONS

- BOLT-ON PROTECTIVE COVER – 180€

PALLET FORKS

PALLET FORKS ISO FEM II

INDEX: **L005**



FEATURES

- **TINE LENGTH** – 1200MM
- **GUIDE RAIL** – 1200MM
- **GUIDE RAIL BUILS AS BASE FRAME FROM PROFILE** 100X80MM

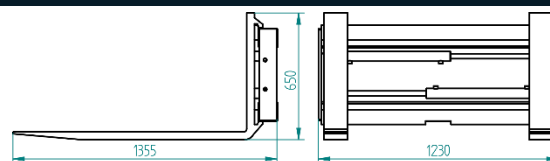
Nr. Art.	Capacity (kg)	Weight (kg)
L005.160	1600	200
L005.200	2000	220
L005.250	2500	250

OPTIONS

- **BOLT-ON PROTECTIVE COVER** – 80€

PALLET FORKS ISO FEM III

INDEX: **L018**



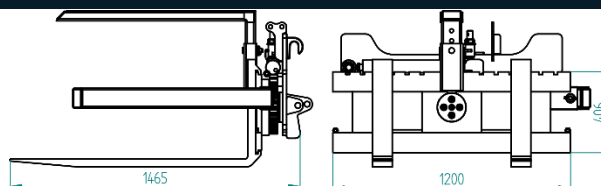
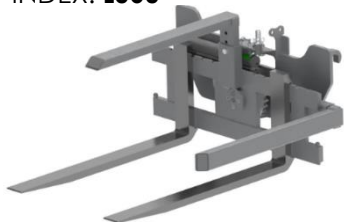
FEATURES

- **TINE LENGTH** – 1200MM
- **GUIDE RAIL** – 1200MM
- **GUIDE RAIL BUILS AS BASE FRAME FROM PROFILE** 100X100MM

Nr. Art.	Capacity (kg)	Weight (kg)
L018.350	3500	300

BOX ROTATOR

INDEX: **L060**



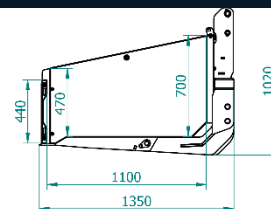
Nr. Art.	Capacity (kg)	Weight (kg)
L060.200	2000	250

FEATURES

- **TINE LENGTH** – 1200MM
- **GUIDE RAIL** – 1200MM
- **SIDE AND MIDDLE FOLDING ARM**

TRANSPORT BOX

INDEX: **K101**



FEATURES

- **COVER** – 3MM
- **SIDE** – 3MM
- **CUTTING EDGE** – HB500/110X12MM

OPTIONS

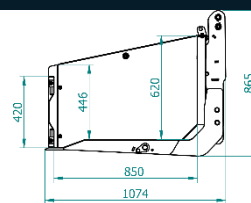
- **HYDRAULIC DUMP** – 690 €

Nr. Art.	Width (mm)	Weight (kg)	Capacity (m3)
K101.150	1500	320	0,98
K101.180	1800	340	1,17
K101.200	2000	355	1,30
K101.220	2200	370	1,43
K101.240	2400	390	1,56

LOADING ATTACHMENTS

TRANSPORT BOX MINI

INDEX: **K102**



FEATURES

- **COVER** – 2,5MM
- **SIDE** – 2,5MM
- **CUTTING EDGE** – HB500/110X12MM

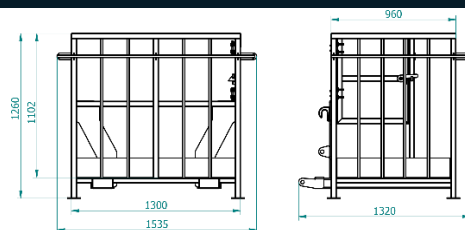
OPTIONS

- **HYDRAULIC DUMP** – 690 €

Nr. Art.	Width (mm)	Weight (kg)	Capacity (m3)
K102.130	1300	205	0,59
K102.150	1500	215	0,68
K102.180	1800	225	0,81
K102.200	2000	235	0,90
K102.220	2200	245	0,99

TOOL PLATFORM

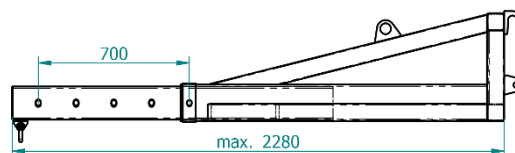
INDEX: **L051**



Nr. Art.	Width (mm)	Weight (kg)
L051.130	1300	150
L051.230	2300	190

LOAD HOOK

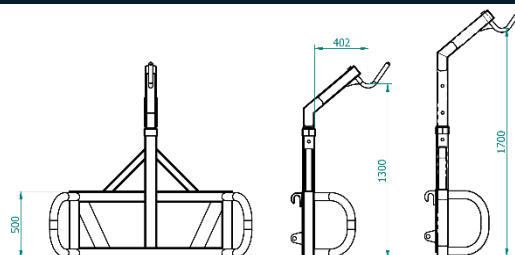
INDEX: **E701**



Nr. Art.	Width (mm)	Weight (kg)
E701	1580-2280	200

BIGBAG LIFTER

INDEX: **E702**

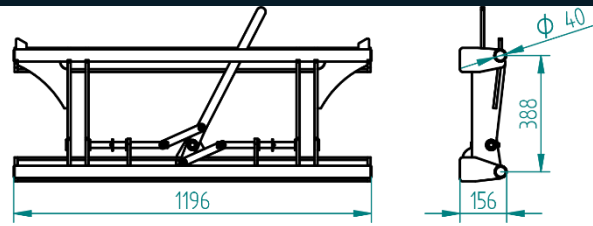


Nr. Art.	Width (mm)	Weight (kg)
E702	1300/1500/1700	100

ADAPTERS

ADAPTER EURO

INDEX: **R107**



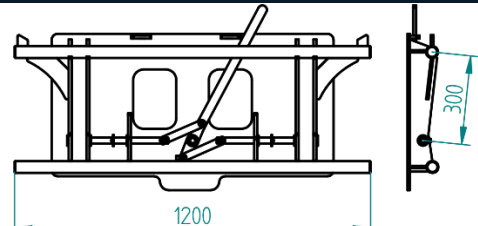
OPTIONS

- MINILOADER ATTACHMENT – PLATE
- MINILOADER ATTACHMENT – HOOKS
- LOADER ATTACHMENT
- **HYDRAULIC LOCKING** – 250€

Nr. Art.	Weight (kg)
R107.001	120
R107.002	130
R107.003	150

ADAPTER EURO LIGHT

INDEX: **R117**



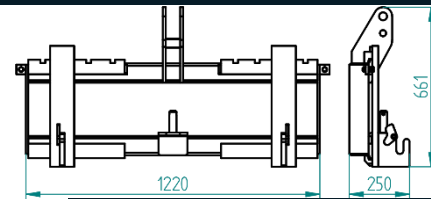
OPTIONS

- MINILOADER ATTACHMENT – PLATE
- MINILOADER ATTACHMENT – HOOKS
- **HYDRAULIC LOCKING** – 250€

Nr. Art.	Weight (kg)
R117.001	80
R117.002	85

ADJUSTABLE ADAPTER

INDEX: **R120**



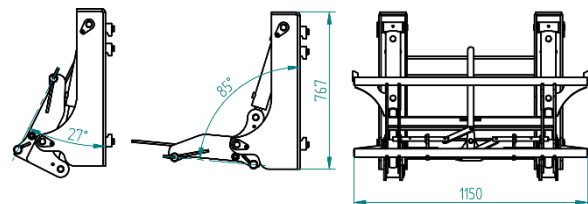
AVAILABLE MOUNTING SET

- EURO – 3 PUNKT KAT II
- MINILOADER PLATE – 3 PUNKT KAT II
- MINILOADER HOOKS – 3 PUNKT KAT II
- LOADER – 3 PUNKT II

Nr. Art.	Weight (kg)
R120.001	90
R120.002	110
R120.003	115
R120.004	140

ADAPTER FOR FORKLIFT ISO FEM II / ISO FEM III

INDEX: **R213**



OPTIONS

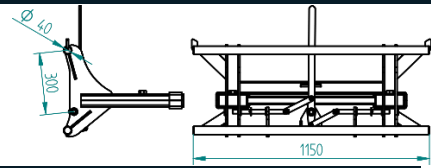
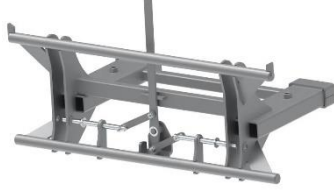
- **HYDRAULIC LOCKING** – 250€

Nr. Art.	Weight (kg)
R213.001	200

ADAPTERS

ADAPTER FORKLIFT - EURO

INDEX: R111



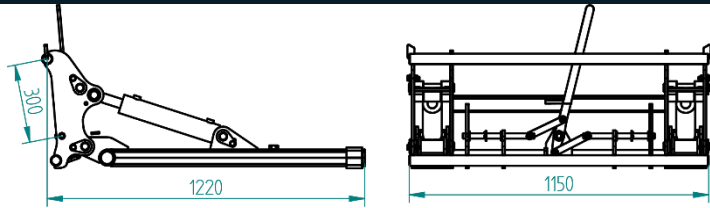
Nr. Art.	Weight (kg)
R111	85

OPTIONS

- **HYDRAULIC LOCKING** – 250€
- **LOADER ATTACHMENT**

ADAPTER FORKLIFT – EURO

INDEX: R110



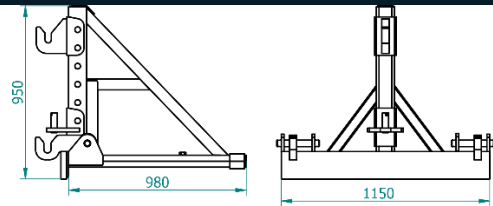
Nr. Art.	Weight (kg)
R110	150

OPTIONS

- **HYDRAULIC LOCKING** – 250€
- **LOADER ATTACHMENT**

MACHINE LIFTER – TUZ II / III

INDEX: R132



Nr. Art.	Weight (kg)	Capacity (kg)
R132	155	1500

FORKLIFT BUCKET

INDEX: R116



Nr. Art.	Weight (kg)	Version
R116.001	65	1 hydraulic cylinder
R116.002	95	2 hydraulic cylinders

WELDED ATTACHMENTS

INDEX: R100



Nr. Art.	Weight (kg)	Version
R100.001	30	Loader type Avant
R100.002	40	EURO
R100.003	45	Loader PLATE
R100.004	70	Loader HOOKS
R100.005	90	Loader

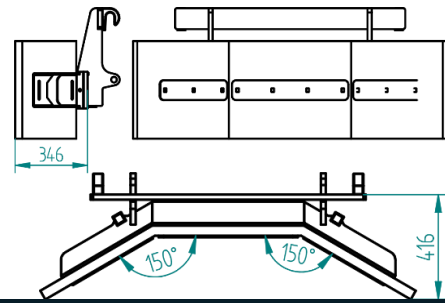
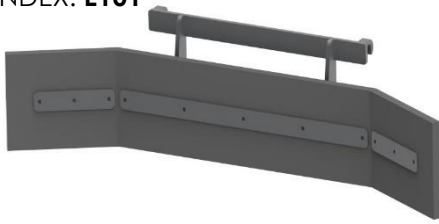
FEATURES

- **PLATE 10/12MM**

RUBBER SHIELD

RUBBER SHIELD

INDEX: E101



FEATURES

- RUBBER HEIGHT – 450MM
- RUBBER WIDTH – 40MM

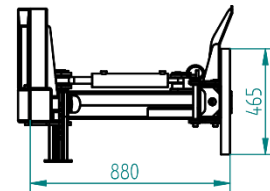
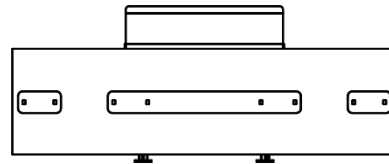
OPTIONS

- FOLDABLE SIDE PART – 125€

Nr. Art.	Width (mm)	Weight (kg)
E101.150	1500	150
E101.170	1700	155
E101.200	2000	160
E101.220	2200	170
E101.240	2400	180
E101.260	2600	190
E101.300	3000	210

HYDRAULIC RUBBER SHIELD

INDEX: E100



FEATURES

- RUBBER HEIGHT – 450MM
- RUBBER WIDTH – 40MM
- ADJUSTABLE ANGLE 55 DEGREES
- FOLDABLE SIDE PART 0 – 30 DEGREES

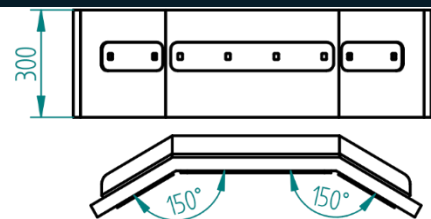
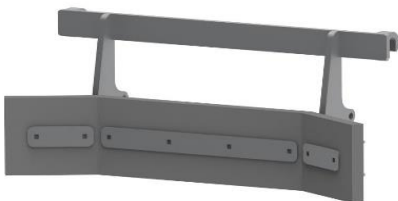
OPTIONS

- HEIGHT LEVEL ADJUSTMENT / GROUND ADAPTATION – 160€

Nr. Art.	Width (mm)	Weight (kg)
E100.150	1500	190
E100.170	1700	210
E100.200	2000	230
E100.220	2200	245
E100.240	2400	260
E100.260	2600	275
E100.300	3000	300

RUBBER SHIELD MINI

INDEX: E103



FEATURES

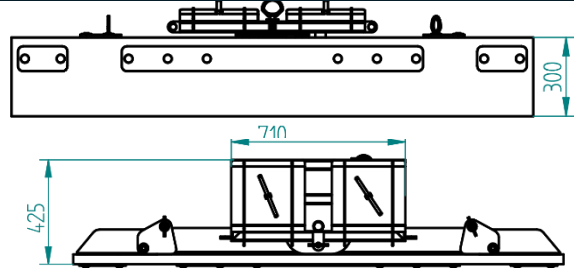
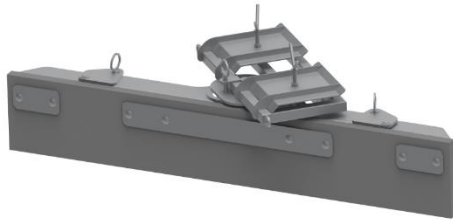
- RUBBER HEIGHT – 300MM
- RUBBER WIDTH – 40MM

Nr. Art.	Width (mm)	Weight (kg)
E103.100	1000	110
E103.120	1200	120
E103.150	1500	130
E103.170	1700	140
E103.200	2000	150

RUBBER SHIELD

RUBBER SHIELD MOUNTED ON BUCKET

INDEX: **E112**



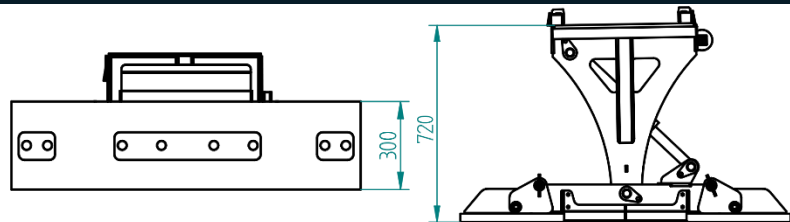
FEATURES

- **RUBBER HEIGHT** – 300MM
- **RUBBER WIDTH** – 40MM
- **MECHANICAL ANGLE ADJUSTMENT**

Nr. Art.	Width (mm)	Weight (kg)
E112.150	1500	190
E112.170	1700	210
E112.200	2000	230
E112.220	2200	245
E112.240	2400	260
E112.260	2600	275
E112.300	3000	300

RUBBER SHIELD MULTI MINI

INDEX: **E107**



FEATURES

- **RUBBER HEIGHT** – 450MM
- **RUBBER WIDTH** – 40MM
- **ANGLE ADJUSTMENT** 0-30 DEGREES
- **FOLDABLE SIDE PART 0** – 35 DEGREES
- **HYDRAULIC FOLDABLE SIDE PART 0** – 35 DEGREES

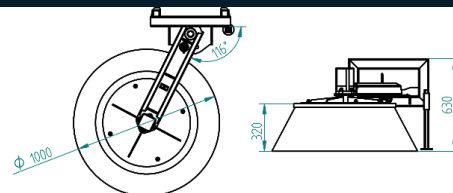
Nr. Art.	Width (mm)	Weight (kg)
E107.120	1500	150
E107.150	1500	150
E107.170	1700	170
E107.200	2000	190
E107.220	2200	210

OPTIONS

- **HYDRAULIC SIDE PART ADJUSTMENT** – 280 €

CLEANING BRUSH

INDEX: **E504**



FEATURES

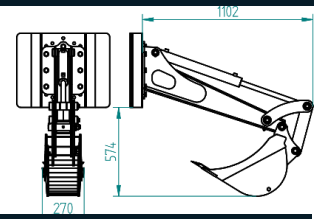
- **BRUSH FI 700/1000MM**

Nr. Art.	Weight [kg]	Version
E504	110	Standard

RUBBER SHIELD

DIGGING ARM

INDEX: **R201**



FEATURES

- **BUCKET – 250MM**

Nr. Art.

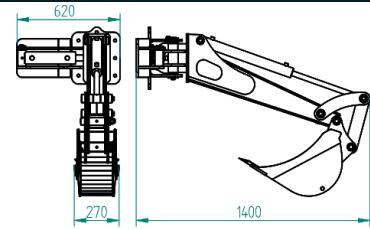
R201

Weight (kg)

110

DIGGING ARM - TURNABLE

INDEX: **R203**



FEATURES

- **BUCKET – 250MM**

Nr. Art.

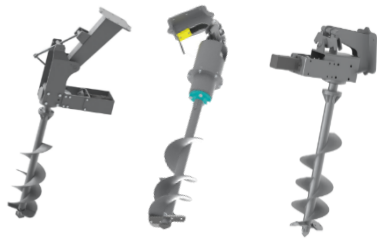
R203

Weight (kg)

190

EARTHDRILL

INDEX: **R204/R216/R207**



Nr. Art.	Weight (kg)	Version
R216.001	170	Motor drive
R204.001	180	Gearbox
R207.001	200	Gearbox with motor drive

FEATURES

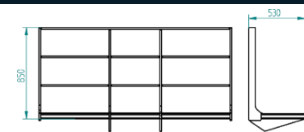
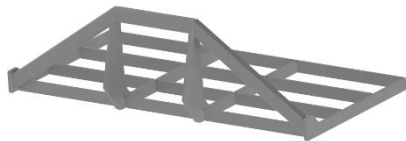
- **DRILL – Ø 300MM**

OPTIONS

- **DRILL – Ø 150/200/250MM – 835 €**

GRADER

INDEX: **E401**

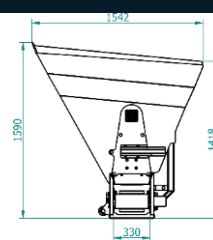


Nr. Art.	Capacity	Weight (kg)
E401.120	1200	85
E401.150	1500	95
E401.180	1800	105
E401.200	2000	120
E401.240	2400	150

BEDDING AND FEEDING BUCKETS

BEDDING BUCKET

INDEX: **A901**



DESCRIPTION

- BEDDING WITH CHOPPED STRAW OR LOOSE MATERIALS
- SPEED REGULATION OF SHAFTS AND BELTS

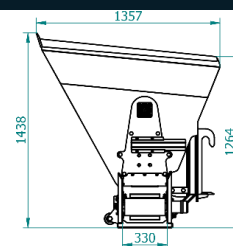
Nr. Art.	Width (mm)	Weight (kg)	Capacity (m ³)
A901.120	1150	400	1,26
A901.130	1300	420	1,43
A901.150	1550	450	1,71
A901.180	1800	510	1,98
A901.200	2000	550	2,20

OPTIONS

- SCREW-ON COVERS

BEDDING BUCKET MINI

INDEX: **A902**



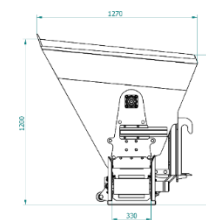
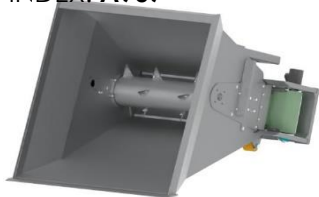
DESCRIPTION

- BEDDING WITH CHOPPED STRAW OR LOOSE MATERIALS
- SPEED REGULATION OF SHAFTS AND BELTS

Nr. Art.	Width (mm)	Weight (kg)	Capacity (m ³)
A902.120	1150	350	0,92
A902.130	1300	370	1,04
A902.150	1550	400	1,24
A902.180	1800	440	1,44

BEDDING BUCKET MINI MINI

INDEX: **A907**



DESCRIPTION

- BEDDING WITH CHOPPED STRAW OR LOOSE MATERIALS
- SPEED REGULATION OF SHAFTS AND BELTS

Nr. Art.	Width (mm)	Weight (kg)	Capacity (m ³)
A907.120	1200	300	0,80
A907.140	1400	320	0,90
A907.160	1600	350	1,00

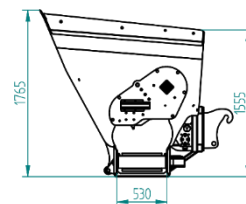
OPTIONS

- DIRECTION CHANGING VALVE – 690 €
- ADDITIONAL ROLLER TO DECREASE HANGING OF THE MATERIAL

BEDDING AND FEEDING BUCKETS

BEDDING / FEEDING BUCKET

INDEX: **A904**



DESCRIPTION

- BEDDING WITH CHOPPED STRAW OR LOOSE MATERIALS
- SPEED REGULATION OF SHAFTS AND BELTS

OPTIONS

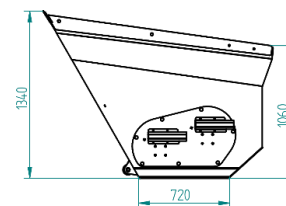
- DIRECTION CHANGING VALVE – 690 €
- SCREW-ON COVERS

Nr. Art.	Width (mm)	Weight (kg)	Capacity (m3)
A904.120	1150	450	1,54
A904.130	1300	490	1,75
A904.150	1550	540	2,10
A904.180	1800	590	2,45
A904.200	2000	650	2,73



BEDDING BUCKET

INDEX: **A905**



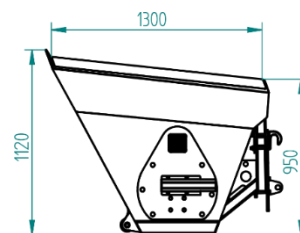
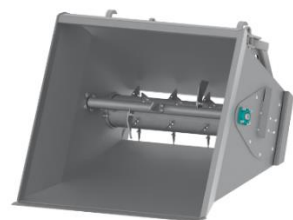
DESCRIPTION

- BEDDING WITH CHOPPED STRAW OR LOOSE MATERIALS
- SPEED REGULATION OF SHAFTS AND BELTS

Nr. Art.	Width (mm)	Weight (kg)	Capacity (m3)
A905.120	1150	400	1,54
A905.130	1300	420	1,75
A905.150	1550	450	2,10
A905.180	1800	510	2,45
A906.200	2000	550	2,73

BEDDING BUCKET

INDEX: **A906**



DESCRIPTION

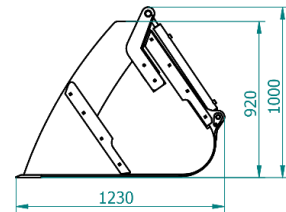
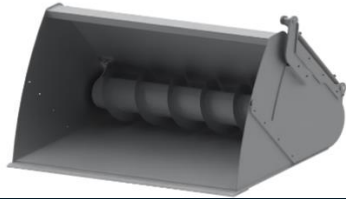
- BEDDING WITH CHOPPED STRAW OR LOOSE MATERIALS
- SPEED REGULATION OF SHAFTS AND BELTS

Nr. Art.	Width (mm)	Weight (kg)	Capacity (m3)
A906.120	1150	350	1,26
A906.130	1300	370	1,43
A906.150	1550	400	1,71
A906.180	1800	450	1,98
A906.200	2000	500	2,20

BEEDING AND FEEDING BUCKETS

FEEDING BUCKET WITH AUGER – ONE SIDE

INDEX: **A607**



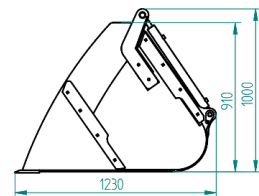
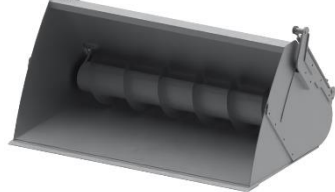
DESCRIPTION

- ONLY FOR GRANULAR / POWDER FEED

Nr. Art.	Width (mm)	Weight (kg)	Capacity (m3)
A607.120	1200	390	0,66
A607.140	1400	410	0,77
A607.160	1600	430	0,88
A607.180	1800	450	0,99
A607.200	2000	470	1,10
A607.220	2200	490	1,21
A607.240	2400	510	1,32

FEEDING BUCKET WITH AUGER – TWO SIDE

INDEX: **A606**



DESCRIPTION

- ONLY FOR GRANULAR / POWDER FEED

OPTIONS

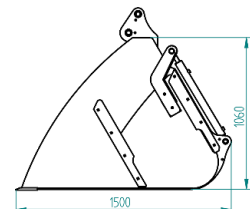
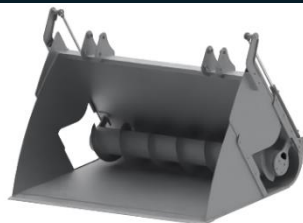
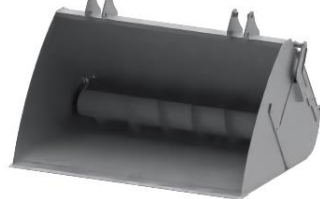
- HYDRAULIC MILL



Nr. Art.	Width (mm)	Weight (kg)	Capacity (m3)
A606.120	1200	410	0,66
A606.140	1400	430	0,77
A606.160	1600	460	0,88
A606.180	1800	480	0,99
A606.200	2000	500	1,10
A606.220	2200	510	1,21
A606.240	2400	530	1,32

FEEDING BUCKET WITH AUGER XL – TWO SIDE

INDEX: **A604**



DESCRIPTION

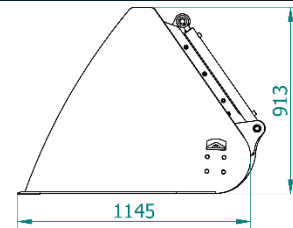
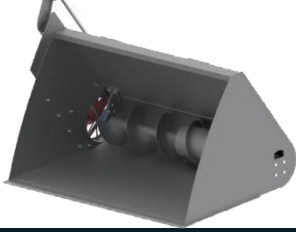
- ONLY FOR GRANULAR / POWDER FEED AND SHORT GRASS

Nr. Art.	Width (mm)	Weight (kg)	Capacity (m3)
A604.160	1600	520	1,36
A604.180	1800	570	1,53
A604.200	2000	590	1,70
A604.220	2200	620	1,87
A604.230	2300	640	1,96
A604.240	2400	660	2,04

BEEDING AND FEEDING BUCKETS

FEEDING BUCKET PLUS

INDEX: **A613**



DESCRIPTION

- FOR CUTTING POTATOES AND BEETROOT

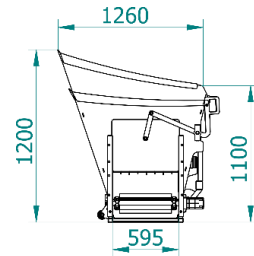
OPTIONS

- CUTTING MODULE** – 1070 €

Nr. Art.	Width (mm)	Weight (kg)	Capacity (m3)
A613.120	1200	390	0,66
A613.140	1400	410	0,77
A613.160	1600	430	0,88
A613.180	1800	450	0,99
A613.200	2000	470	1,10
A613.220	2200	490	1,21
A613.240	2400	510	1,32

FEEDING BUCKET WITH BELT MINI

INDEX: **A611**



DESCRIPTION

- ONLY FOR GRANULAR / POWDER FEED AND SHORT GRASS

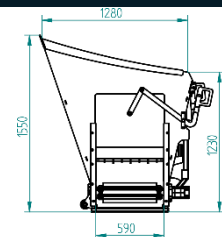
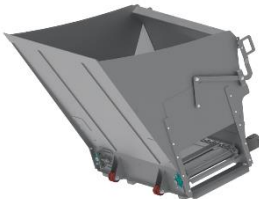
Nr. Art.	Width (mm)	Weight (kg)	Capacity (m3)
A611.120	1220	300	1,10
A611.150	1520	350	1,30

OPTIONS

- HYDRAULIC SLIDING FLAP** – 760 €
- MILLING MACHINE IN TOP OF CHAIN** – 1095 €

FEEDING BUCKET WITH BELT

INDEX: **A605**



DESCRIPTION

- ONLY FOR GRANULAR / POWDER FEED AND SHORT GRASS

Nr. Art.	Width (mm)	Weight (kg)	Capacity (m3)
A605.120	1220	450	1,22
A605.150	1520	510	1,52
A605.180	1820	590	1,82
A605.200	2020	650	2,00

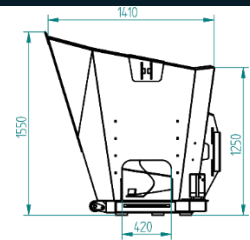
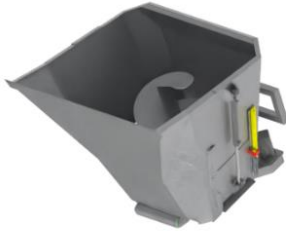
OPTIONS

- HYDRAULIC SLIDING FLAP** – 760 €
- MILLING MACHINE IN TOP OF CHAIN** – 1095 €

BEEDING AND FEEDING BUCKETS

FEED MIXER

INDEX: P302



Nr. Art.	Width (mm)	Weight (kg)	Capacity (m3)
P302.150	1520	520	1,50
P302.220	2360	750	2,50

OPTIONS

- HYDRAULIC MILL

FEEDING BUCKET

INDEX: A610



FEATURES

- HYDRAULIC MILL

Nr. Art.	Width (mm)	Weight (kg)	Capacity (m3)
A610.120	1200	500	1,0
A610.150	1500	600	1,20
A610.180	1800	650	1,50
A610.200	2000	700	1,70
A610.220	2200	750	1,90

SPECIAL OPTIONS FOR FEEDING BUCKET

INDEX: D,F,FH



D



F



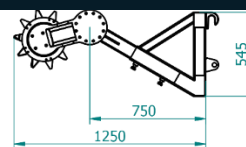
FH

Nr. Art.	Width (mm)	Nr. Art.	Width (mm)	Nr. Art.	Width (mm)
D.120	1200	F.120	1200	FH.120	1200
D.140	1400	F.140	1400	FH.140	1400
D.150	1500	F.150	1500	FH.150	1500
D.160	1600	F.160	1600	FH.160	1600
D.180	1800	F.180	1800	FH.180	1800
D.200	2000	F.200	2000	FH.200	2000
D.220	2200	F.220	2200	FH.220	2200
D.240	2400	F.240	2400	FH.240	2400

BEEDING AND FEEDING BUCKETS

SILAGE CUTTER

INDEX: **A603**



FEATURES

- BOLT-ON CUTTING KNIVES

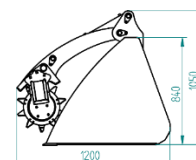
OPTIONS

- ADDITIONAL HYDRAULIC MOTOR – 400 €

Nr. Art.	Width (mm)	Weight (kg)
A603.120	1200	160
A603.140	1400	180
A603.160	1600	190
A603.180	1800	200
A603.200	2000	210
A603.220	2200	230
A603.240	2400	250

BUCKET WITH HYDRAULIC CUTTER

INDEX: **A608**



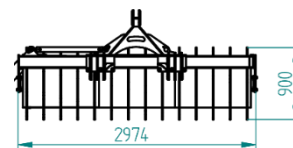
DESCRIPTION

- HYDRAULIC MILL

Nr. Art.	Width (mm)	Weight (kg)	Capacity (m3)
A608.120	1200	340	0,54
A608.140	1400	360	0,63
A608.160	1600	380	0,72
A608.180	1800	400	0,81
A608.200	2000	420	0,90
A608.220	2200	440	0,99
A608.240	2400	460	1,08

SILLAGE ROLLER / CAMPBELL ROLLER

INDEX: **E902**



FEATURES

- ROLLER DIAMETER 900MM

OPTIONS

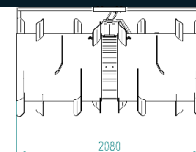
- STRENGTHENING ARM – 2360€
- HYDRAULIC SIDE SHIFT- 1525€



Nr. Art.	Width (mm)	Weight (kg)
E902.250	2500	1500
E902.300	3000	1700

SILLAGE ROLLER - FRONT

INDEX: **E904**



FEATURES

- ROLLER DIAMETER 1140MM

Nr. Art.	Width (mm)	Weight (kg)
E904.200	2000	730
E904.250	2500	900

BEEDING AND FEEDING BUCKETS

FEEDING AUGER

INDEX: E802



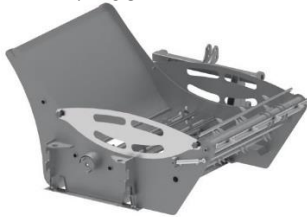
OPTIONS

- **ADDITIONAL FEED CONTAINER** – 1475 €

Nr. Art.	Width (mm)	Weight (kg)
E802.150	1500	260

BALE UNROLLER

INDEX: D604



Nr. Art.	Width (mm)	Weight (kg)
D604	1500	450

DESCRIPTION

- SILAGE BALE FEEDING
- STRAW BALE SPREADING
- UNROLLING SPEED CONTROL

OPTIONS

- **BEEDING ROTOR** – 1285€



BALE UNROLLER

INDEX: D602



Nr. Art.	Width (mm)	Weight (kg)
D602	1500	750

DESCRIPTION

- SILAGE BALE FEEDING
- STRAW BALE SPREADING
- UNROLLING SPEED CONTROL

BALE WRAPPER

INDEX: D701



Nr. Art.	Weight [kg]	Version
D701	480	Standard
D701	550	With bale gripper

FEATURES

- **MAX BALE DIAMETER** – 1300MM
- **WIDE FILM WIDTH** – 1250MM
- **MAX BALE WEIGHT** – 100KG
- **FILM FEEDER** 500/750MM
- **WRAPPING TIME** – 120 SEC
- **RECOMMENDED POWER** - 38HP

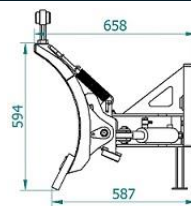
OPTIONS

- **VERSION WITH BALE GRIPPER** – 450€

SNOW PLOWS

SNOW PLOW MINI

INDEX: **G103**



FEATURES

- HYDRAULIC TURNING ANGLE - 25 DEGREES

Nr. Art.	Width (mm)	Weight (kg)	Mocowanie
G103.120	1200	120	Triangle com.
G103.150	1500	130	Triangle com.
G103.180	1800	140	Triangle com.
G103.200	2000	150	Triangle com.

SNOW PLOW MINI VARIO / V SYSTEM

INDEX: **G102**



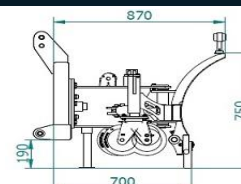
FEATURES

- HYDRAULIC TURNING ANGLE - 30 DEGREES

Nr. Art.	Width (mm)	Weight (kg)	Mocowanie
G102.130	1300	140	Triangle com.
G102.150	1500	160	Triangle com.
G102.180	1800	175	Triangle com.
G102.200	2000	190	Triangle com.

SNOW PLOW ECO

INDEX: **G204**



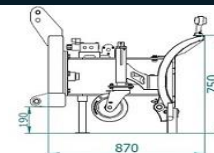
FEATURES

- HYDRAULIC TURNING ANGLE - 30 DEGREES

Nr. Art.	Width (mm)	Weight (kg)	Mocowanie
G204.150	150	200	3 Punkt Kat I
G204.180	180	220	3 Punkt Kat I
G204.200	200	240	3 Punkt Kat I
G204.220	220	260	3 Punkt Kat I

SNOW PLOW ECO VARIO / V SYSTEM

INDEX: **G205**



FEATURES

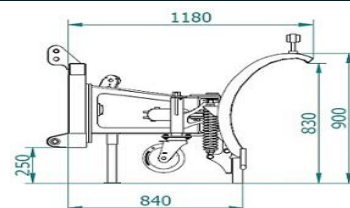
- HYDRAULIC TURNING ANGLE - 30 DEGREES

Nr. Art.	Width (mm)	Weight (kg)	Mocowanie
G205.150	1500	220	3 Punkt Kat I
G205.180	1800	240	3 Punkt Kat I
G205.200	2000	260	3 Punkt Kat I
G205.220	2200	280	3 Punkt Kat I

SNOW PLOWS

SNOW PLOW UNIVERSAL

INDEX: **G304**



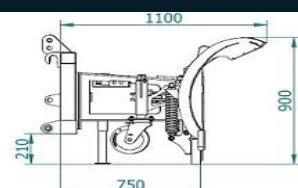
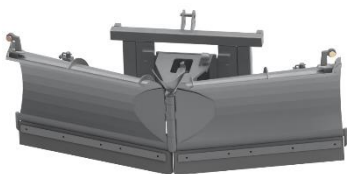
FEATURES

- HYDRAULIC TURNING ANGLE – 30 DEGREES

Nr. Art.	Width (mm)	Weight (kg)	Mocowanie
G304.220	220	400	3 Punkt Kat II
G304.250	250	420	3 Punkt Kat II
G304.270	270	470	3 Punkt Kat II
G304.300	300	520	3 Punkt Kat II
G304.330	330	570	3 Punkt Kat II

SNOW PLOW UNIVERSAL VARIO / V SYSTEM

INDEX: **G305**



FEATURES

- HYDRAULIC TURNING ANGLE – 30 DEGREES

Nr. Art.	Width (mm)	Weight (kg)	Mocowanie
G305.220	220	430	3 Punkt Kat II
G305.250	250	490	3 Punkt Kat II
G305.270	270	510	3 Punkt Kat II
G305.300	300	540	3 Punkt Kat II
G305.330	330	590	3 Punkt Kat II

SNOW PLOW HEIGHT ADJUSTMENT ATTACHMENT

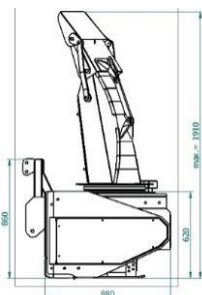
INDEX: **G111/G211/G311**



Nr. Art.	Version
G111	Mini
G211	Eco
G311	Universal

ROTARY SNOW PLOW

INDEX: **G1203**



Nr. Art.	Width rob.(mm)	Weight (kg)	Mocowanie
G1203.120	1200	380	Euro
G1203.150	1500	420	Euro
G1203.180	1800	550	Euro
G1203.200	2000	620	Euro

OPTIONS

- HYDRAULIC DRIVE – 1000 €

SALT / SAND SPREADERS

STANDARD EQUIPMENT FOR ALL SNOW PLOWS

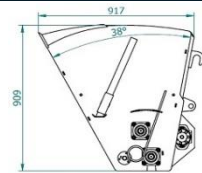
- CUTTING EDGE WORKING ON SPRINGS
- LEVEL ADJUSTMENT / GROUND ADJUSTMENT
- HYDRAULIC SIDE PANELS

SNOW PLOW OPTIONS

- SUPPORT WHEELS 160/50 – 250€
- SUPPORT WHEELS 200/50 – 320€
- SKIDS – 140€
- LED LIGHTS – 90€
- CUTTING EDGE HB500/150X16MM, L=1000MM – 115€
- CUTTING EDGE – PPN POLIURETAN 150X20MM, L=1000MM – 170€
- FRAME WITHOUT MOUNTING - 215€ / MINILOADER - 400€ / TELESCOPIC - 475€ / KOMBI 345€
- HYDRAULIC OVERLOAD PROTECTION SYSTEM - 605€

SALT / SAND SPREADER

INDEX: **E601**



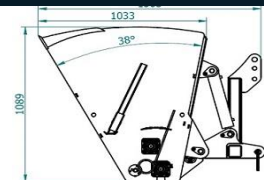
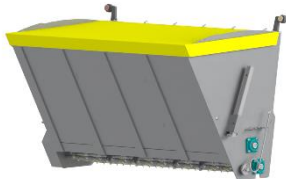
OPTIONS

- TUZ TRACTOR MOUNTING WITH HYDRAULIC SYSTEM – 880€

Nr. Art.	Width rob.(mm)	Weight (kg)	Capacity (m3)	Mocowanie
E601.120	1200	300	0,54	Euro
E601.140	1400	340	0,63	Euro
E601.160	1600	360	0,72	Euro
E601.180	1800	390	0,83	Euro
E601.200	2000	410	0,90	Euro
E601.220	2200	430	0,99	Euro

SALT / SAND SPREADER XL

INDEX: **E605**



OPTIONS

- TUZ TRACTOR MOUNTING WITH HYDRAULIC SYSTEM – 880€

Nr. Art.	Width rob.(mm)	Weight (kg)	Capacity (m3)	Mocowanie
E605.140	1400	480	0,91	Euro
E605.160	1600	510	1,04	Euro
E605.180	1800	550	1,19	Euro
E605.200	2000	590	1,30	Euro
E605.220	2200	630	1,30	Euro
E605.240	2400	650	1,56	Euro

BROOM WEED MACHINE

INDEX: **E502**

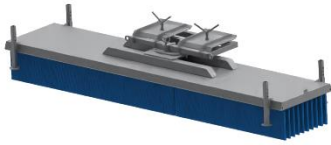


Nr. Art.	Średnica szczotki (mm)	Weight (kg)
E502	500	200

CONCRETE MIXERS

STRIP BROOM

INDEX: **E501**



Nr. Art.	Width (mm)	Weight (kg)
E501.150	1500	120
E501.200	2000	140
E501.250	2500	160
E501.300	3000	180

FEATURES

- 10 ROWS OF BRUSHES

OPTIONS

- MOUNTING EURO / LOADER / MINILOADER

CONCRETE MIXER – PTO - 800L

INDEX: **I101**



Nr. Art.	Width (mm)	Height(mm)	Weight (kg)
I101	1550	1250	520

OPTIONS

- ADDITIONAL MOUNTED HYDRAULIC MOTOR – 1000 €

HYDRAULIC CONCRETE MIXER – 800L

INDEX: **I102**



Nr. Art.	Width (mm)	Height(mm)	Weight (kg)
I102	1550	1250	550

DESCRIPTION

- WITH HYDRAULIC MOTOR

CONCRETE MIXER WITH SELF LOADING BUCKET – 800L

INDEX: **I103**



Nr. Art.	Width (mm)	Height(mm)	Weight (kg)
I103.W	1550	1250	720
I103.H	1550	1250	750

CONCRETE MIXER – PTO - 1200L

INDEX: **I104**



Nr. Art.	Width (mm)	Height(mm)	Weight (kg)
I104	1900	1250	810

OPTIONS

- ADDITIONAL MOUNTED HYDRAULIC MOTOR – 1000 €

HYDRAULIC CONCRETE MIXER – 1200L

INDEX: **I105**



Nr. Art.	Width (mm)	Height(mm)	Weight (kg)
I105	1900	1250	840

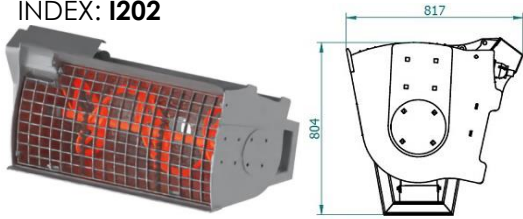
DESCRIPTION

- WITH HYDRAULIC MOTOR

OTHER EQUIPMENT

BETONMIXER

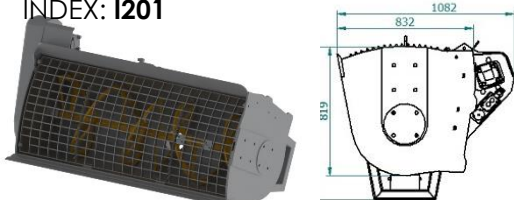
INDEX: I202



Nr. Art.	Width(mm)	Capacity (m3)	Weight (kg)
I202.100	1000	0,26	290
I202.120	1200	0,31	310
I202.140	1400	0,36	340
I202.160	1600	0,42	380

BETONMIXER

INDEX: I201



Nr. Art.	Width (mm)	Capacity (m3)	Weight (kg)
I201.120	1200	0,60	510
I201.140	1400	0,70	560
I201.160	1600	0,80	600
I201.180	1800	0,90	660
I201.200	2000	1,00	700
I201.220	2200	1,10	740

OPTIONS

- SIDE DUMPING

RIDING ARENA GRADER

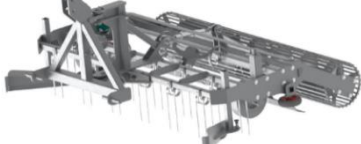
INDEX: W101



Nr. Art.	Width [mm]	Weight [kg]
W101.150	1500	170
W101.200	2000	210
W101.240	2400	250

RIDING ARENA GRADER PRO

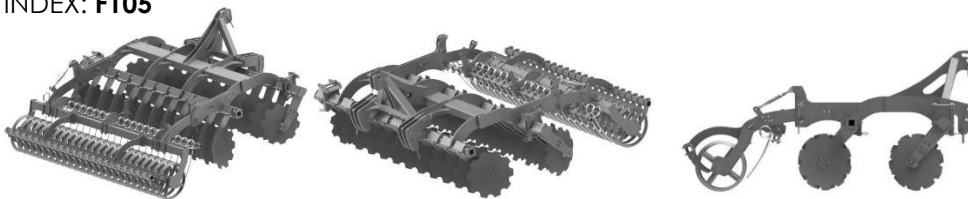
INDEX: W103



Nr. Art.	Width [mm]	Weight [kg]
W103.160	1600	260
W103.200	2000	290
W103.245	2450	320

DISC HARROW

INDEX: F105



FEATURES

- TWO ROWS OF DISCS - 560MM
- RUBBER SHOCK ABSORBERS
- TUBULAR ROLLER
- SPACE BETWEEN SETS OF DISCS - 1000MM

Nr. Art.	Width [mm]	Weight [kg]	Discs [pcs]
F105	2500	1200	20
F105	2700	1300	22
F105	3000	1400	24

OPTIONS

- ADJUSTABLE HYDRAULIC ROLLER HEIGHT
- PREMIUM HUB - 680 €
- ADJUSTABLE SIDE SCREEN WITH COPYING THE TERRAIN - 210 €
- HYDRAULIC HEIGHT ADJUSTMENT OF WORKING DEPTH - 520 €
- ROW OF SPRING TINES - 650 €
- FLEX ROLLER



